

Promoters,
Builders & Developers:



TEJA 
FORTUNE
HEIGHTS

A TRIUMPH TO CELEBRATE



Approval No.
4775/GHMC/SLP/2023-BP



Registration No.
P01100006661



TEJA
FORTUNE
HEIGHTS

AERIAL VIEW

MEET LIFE ON
YOUR TERMS HERE
CLUBHOUSE VIEW



Features & Facilities

✓
Fully-equipped
Gymnasium

✓
Multi-purpose
Function Hall

✓
Meditation/Yoga
& Aerobics Hall

✓
Cafeteria

✓
Supermarket

✓
Library Room
& Work Space

✓
Indoor Games

✓
Guest Rooms

LAYOUT PLAN



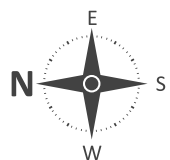
OF AN EXTRAORDINARY SCALE

Comprising four blocks in all, Block A - with stilt + 10 floors, and Blocks B, C & D - with two basements + stilt + 10 floors, **Fortune Heights** soars over other residences in the area bidding extraordinary scale, imbuing unparalleled architectural finesse, and unobstructed views. Anchored tallest on the landscape with expansive windows letting in sunlight and fresh air, hung-out balconies and sun-drenched terraces present kaleidoscopic views of the neighbourhood and city.

- Premium Property of **3.75 Acres**
- Premium Condominiums **480 Lavish Flats**
- A Setting **of a Gated Community**
- Independent **Clubhouse Building**
- Considerate **Senior Citizen Features**
- Choose from Premium Flat Sizes of **1025 to 1900 Sq. Ft**
- Live Your Choice Lifestyle **Choice of Innumerable Amenities**

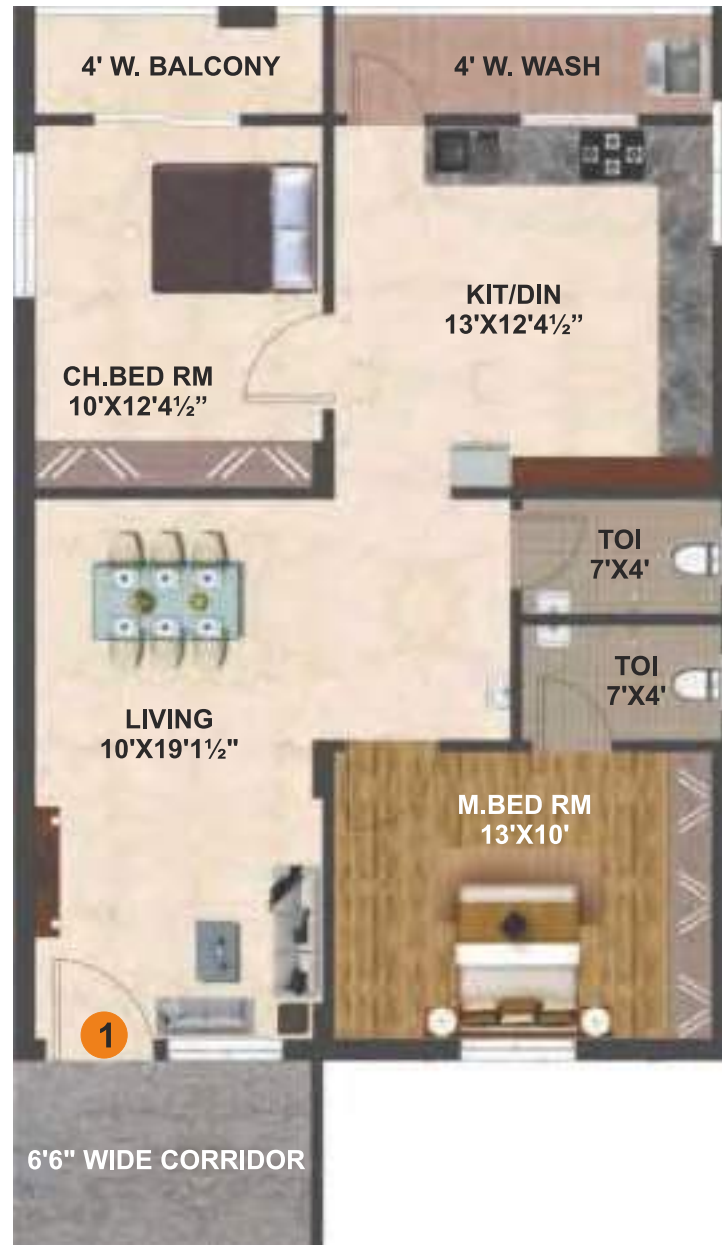
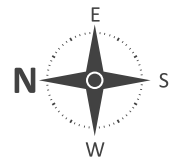
FIRST FLOOR PLAN

BLOCK A



FIRST FLOOR PLAN

BLOCK A



BLOCK - A

Flat No. 1

FACING : WEST

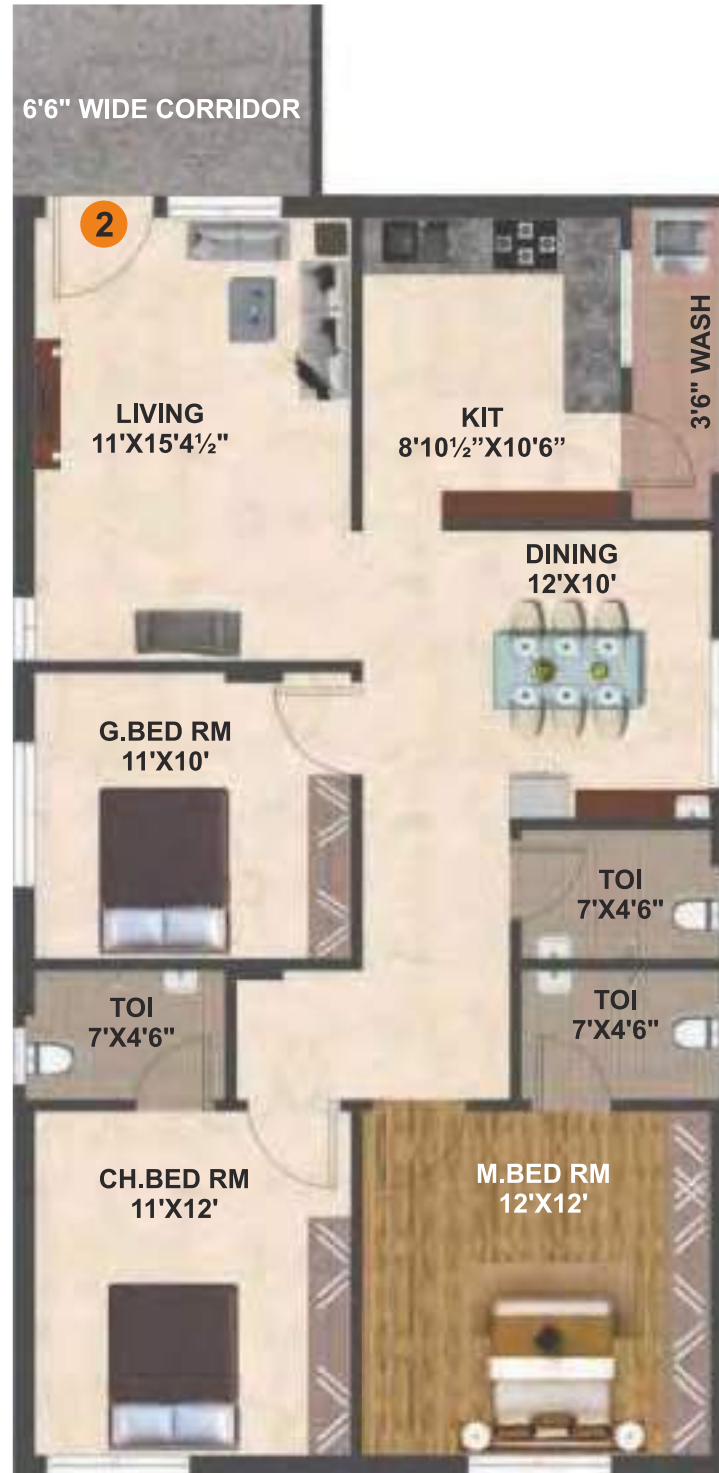
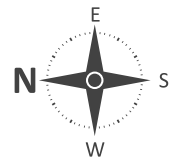
TYPE : 2 BHK

AREA : 1150 SFT



FIRST FLOOR PLAN

BLOCK A



BLOCK - A Flat No. 2

FACING : EAST

TYPE : 3 BHK

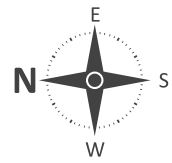
AREA : 1420 SFT



KEY PLAN

FIRST FLOOR PLAN

BLOCK A



BLOCK - A

Flat No. 3

FACING : EAST

TYPE : 3 BHK

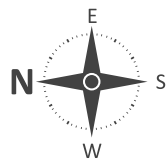
AREA : 1500 SFT



TYPICAL FLOOR PLAN

2ND TO 10TH FLOORS

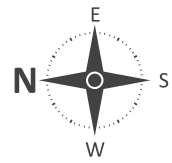
BLOCK A



TYPICAL FLOOR PLAN

2ND TO 10TH FLOORS

BLOCK A



BLOCK - A

Flat No. 1

FACING : WEST

TYPE : 3 BHK

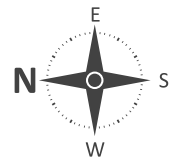
AREA : 1405 SFT



TYPICAL FLOOR PLAN

2ND TO 10TH FLOORS

BLOCK A



BLOCK - A

Flat No. 2

FACING : EAST

TYPE : 3 BHK

AREA : 1700 SFT

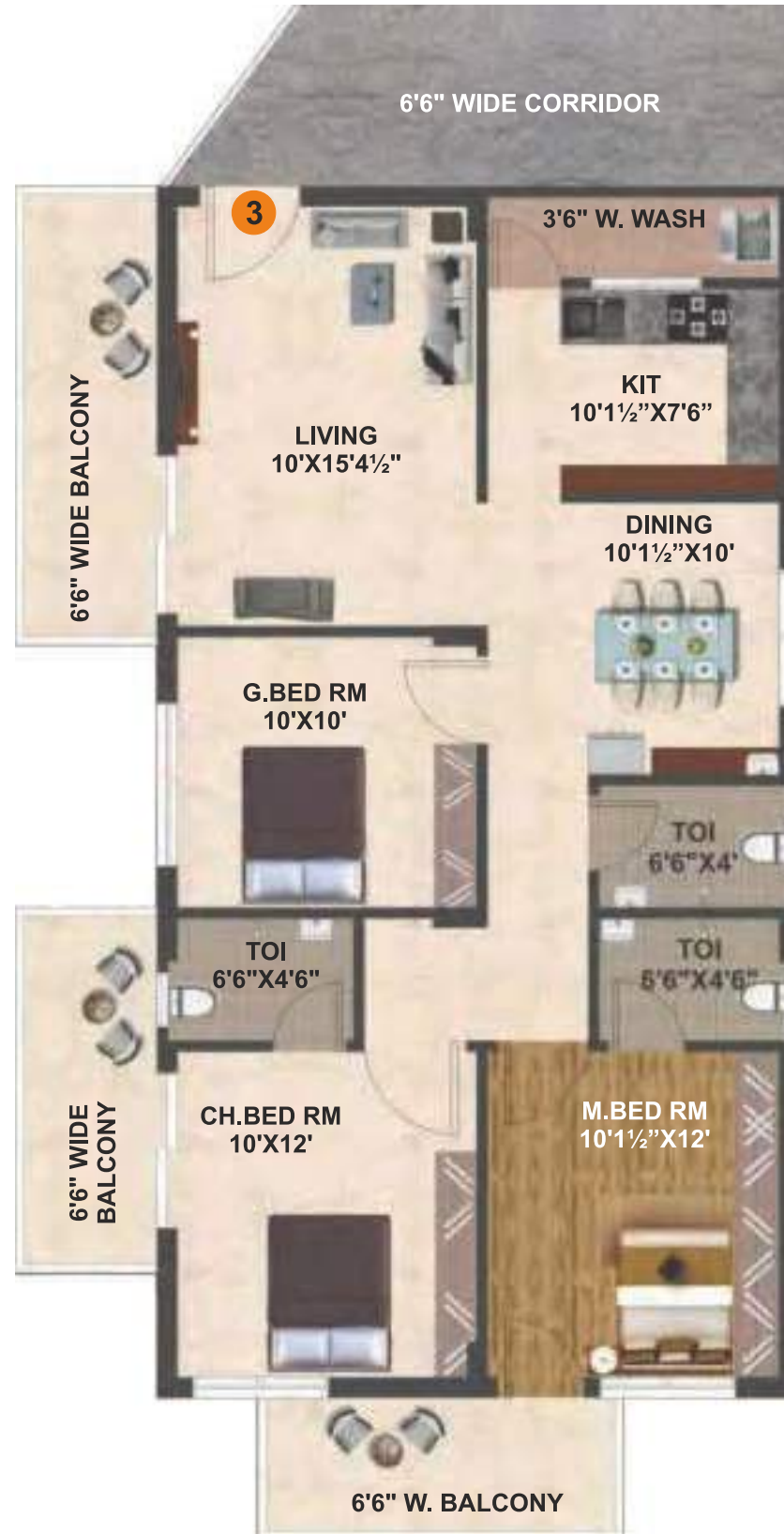
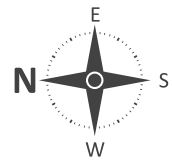


KEY PLAN

TYPICAL FLOOR PLAN

2ND TO 10TH FLOORS

BLOCK A



BLOCK - A

Flat No. 3

FACING : EAST

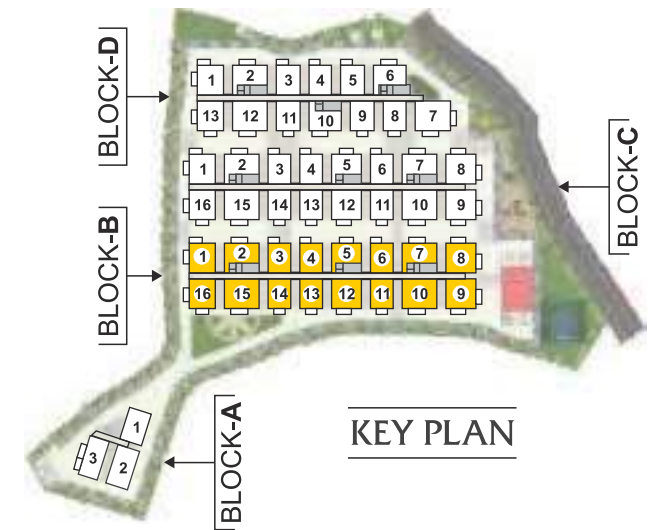
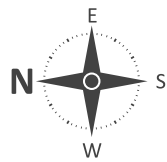
TYPE : 3 BHK

AREA : 1600 SFT



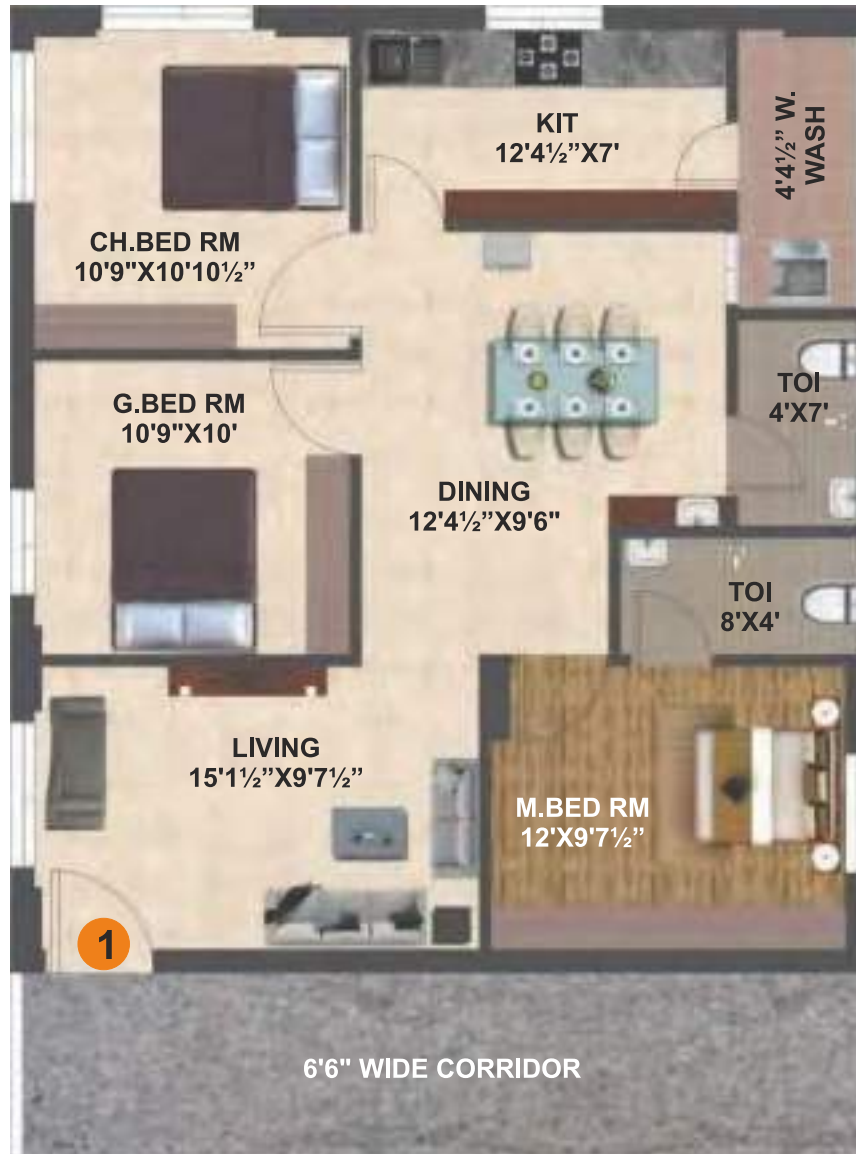
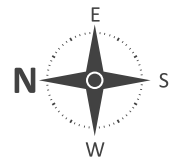
FIRST FLOOR PLAN

BLOCK B



FIRST FLOOR PLAN

BLOCK B



BLOCK - B
Flat No. 1

FACING : WEST

TYPE : 3 BHK

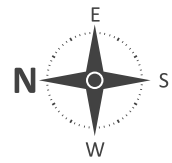
AREA : 1210 SFT



KEY PLAN

FIRST FLOOR PLAN

BLOCK B



BLOCK - B
Flat No. 2

FACING : WEST

TYPE : 2 BHK

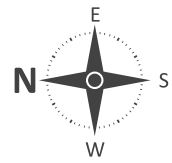
AREA : 1155 SFT



KEY PLAN

FIRST FLOOR PLAN

BLOCK B



BLOCK - B
Flat No. 3

FACING : WEST

TYPE : 2 BHK

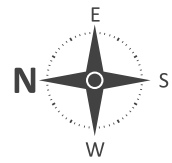
AREA : 1050 SFT



KEY PLAN

FIRST FLOOR PLAN

BLOCK B



BLOCK - B Flat No. 4

FACING : WEST

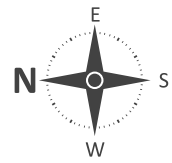
TYPE : 2 BHK

AREA : 1050 SFT



FIRST FLOOR PLAN

BLOCK B



BLOCK - B
Flat No. 5

FACING : WEST

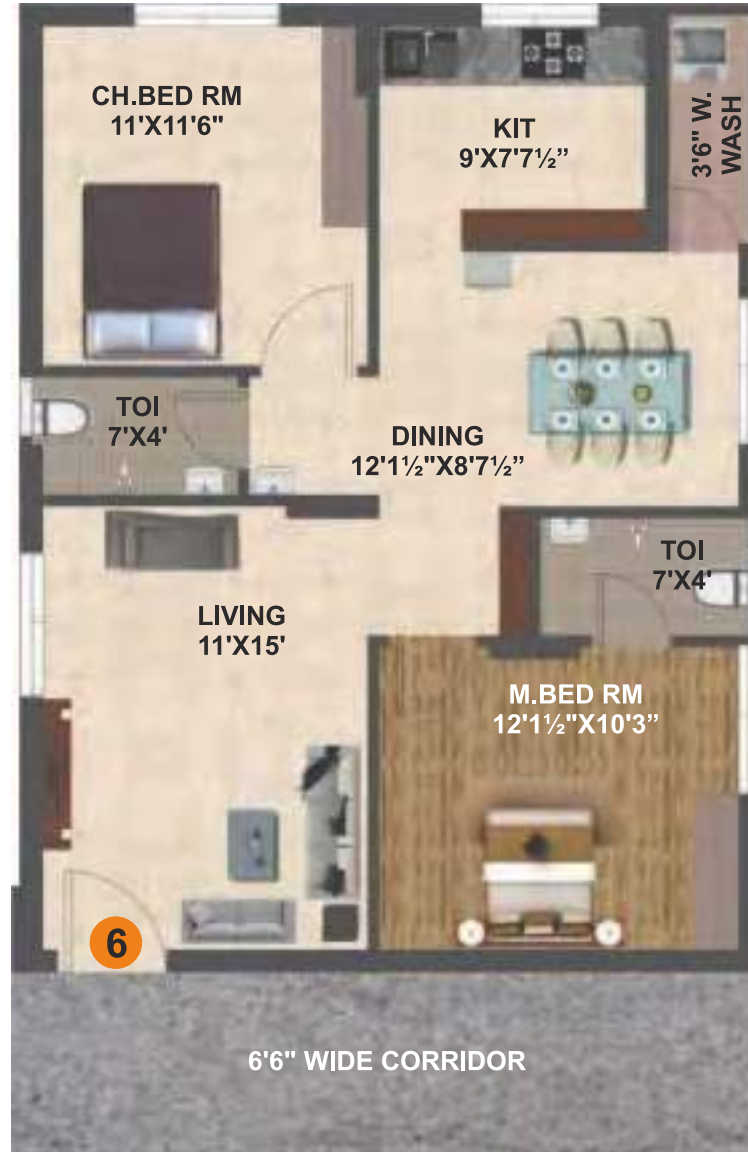
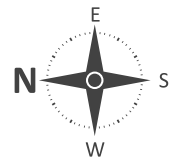
TYPE : 2 BHK

AREA : 1100 SFT



FIRST FLOOR PLAN

BLOCK B



BLOCK - B Flat No. 6

FACING : WEST

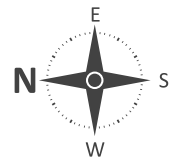
TYPE : 2 BHK

AREA : 1050 SFT



FIRST FLOOR PLAN

BLOCK B



BLOCK - B
Flat No. 7

FACING : WEST

TYPE : 2 BHK

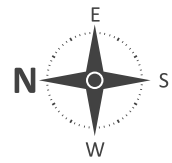
AREA : 1155 SFT



KEY PLAN

FIRST FLOOR PLAN

BLOCK B



BLOCK - B

Flat No. 8

FACING : WEST

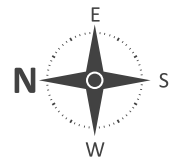
TYPE : 3 BHK

AREA : 1375 SFT



FIRST FLOOR PLAN

BLOCK B



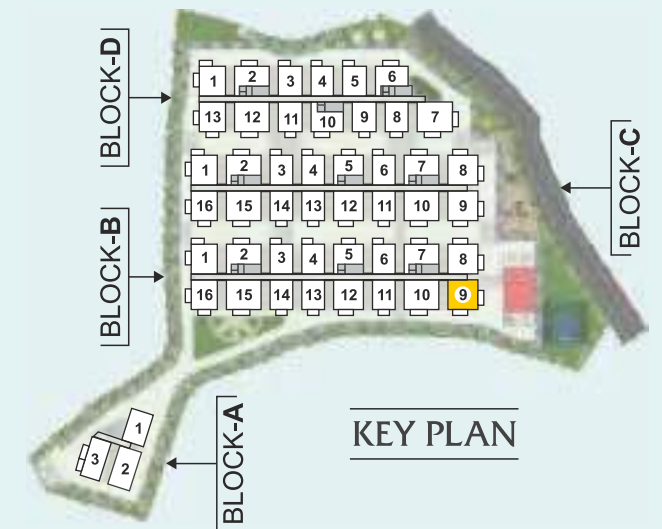
BLOCK - B

Flat No. 9

FACING : EAST

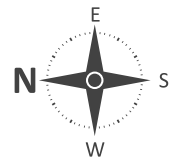
TYPE : 3 BHK

AREA : 1375 SFT



FIRST FLOOR PLAN

BLOCK B



BLOCK - B Flat No. 10

FACING : EAST

TYPE : 3 BHK

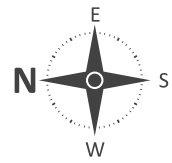
AREA : 1600 SFT



KEY PLAN

FIRST FLOOR PLAN

BLOCK B



BLOCK - B Flat No. 11

FACING : EAST

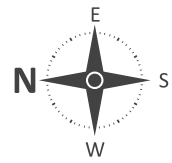
TYPE : 2 BHK

AREA : 1050 SFT



FIRST FLOOR PLAN

BLOCK B



BLOCK - B
Flat No. 12

FACING : EAST

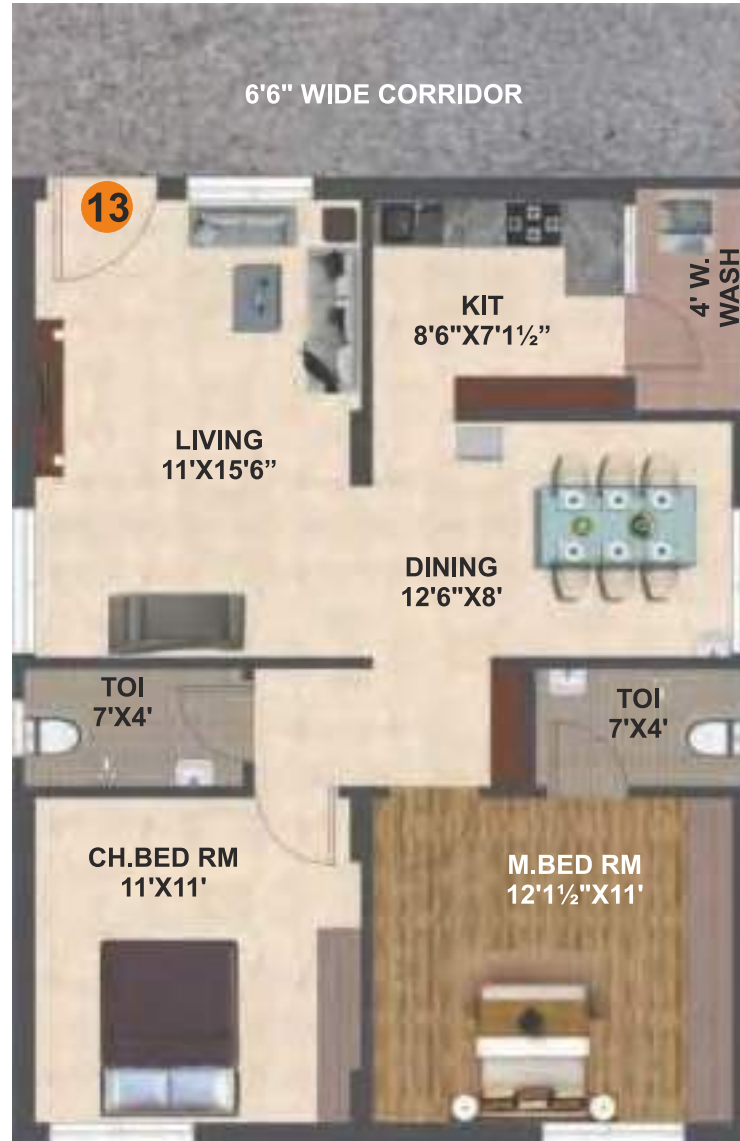
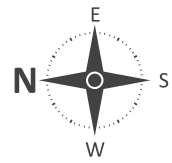
TYPE : 3 BHK

AREA : 1375 SFT



FIRST FLOOR PLAN

BLOCK B



BLOCK - B Flat No. 13

FACING : EAST

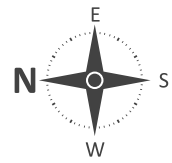
TYPE : 2 BHK

AREA : 1050 SFT



FIRST FLOOR PLAN

BLOCK B



BLOCK - B

Flat No. 14

FACING : EAST

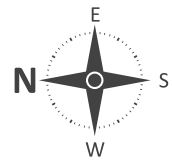
TYPE : 2 BHK

AREA : 1050 SFT



FIRST FLOOR PLAN

BLOCK B



BLOCK - B Flat No. 15

FACING : EAST

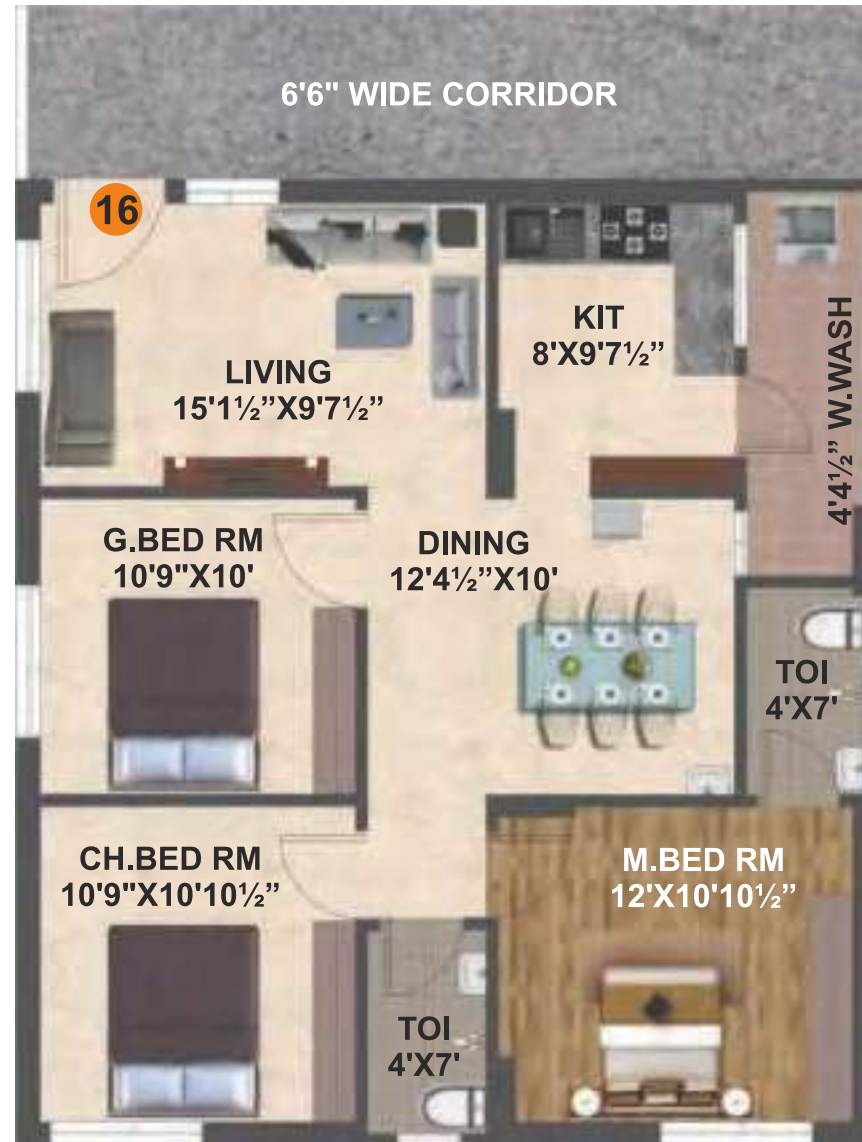
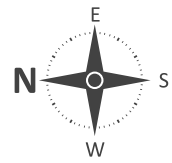
TYPE : 3 BHK

AREA : 1600 SFT



FIRST FLOOR PLAN

BLOCK B



BLOCK - B Flat No. 16

FACING : EAST

TYPE : 3 BHK

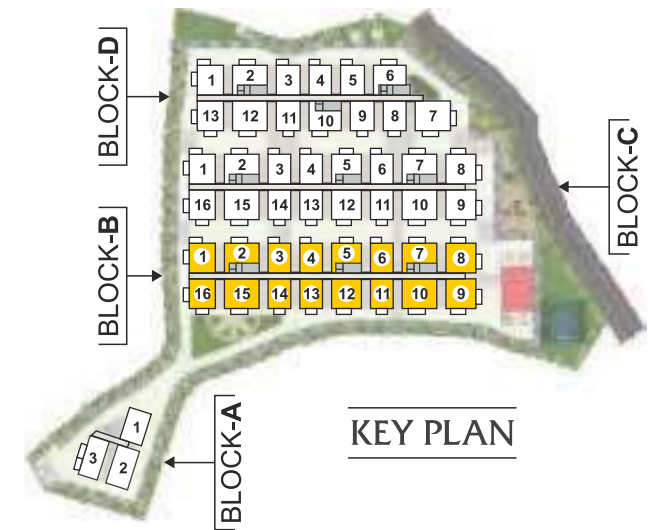
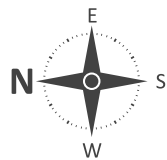
AREA : 1210 SFT



TYPICAL FLOOR PLAN

2ND TO 10TH FLOORS

BLOCK B

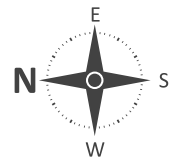


KEY PLAN

TYPICAL FLOOR PLAN

2ND TO 10TH FLOORS

BLOCK B



BLOCK - B

Flat No. 1

FACING : WEST

TYPE : 3 BHK

AREA : 1450 SFT

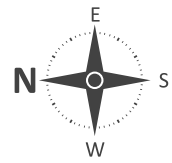


KEY PLAN

TYPICAL FLOOR PLAN

2ND TO 10TH FLOORS

BLOCK B



BLOCK - B Flat No. 2

FACING : WEST

TYPE : 2 BHK

AREA : 1300 SFT

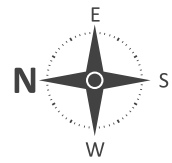


KEY PLAN

TYPICAL FLOOR PLAN

2ND TO 10TH FLOORS

BLOCK B



BLOCK - B

Flat No. 3

FACING : WEST

TYPE : 2 BHK

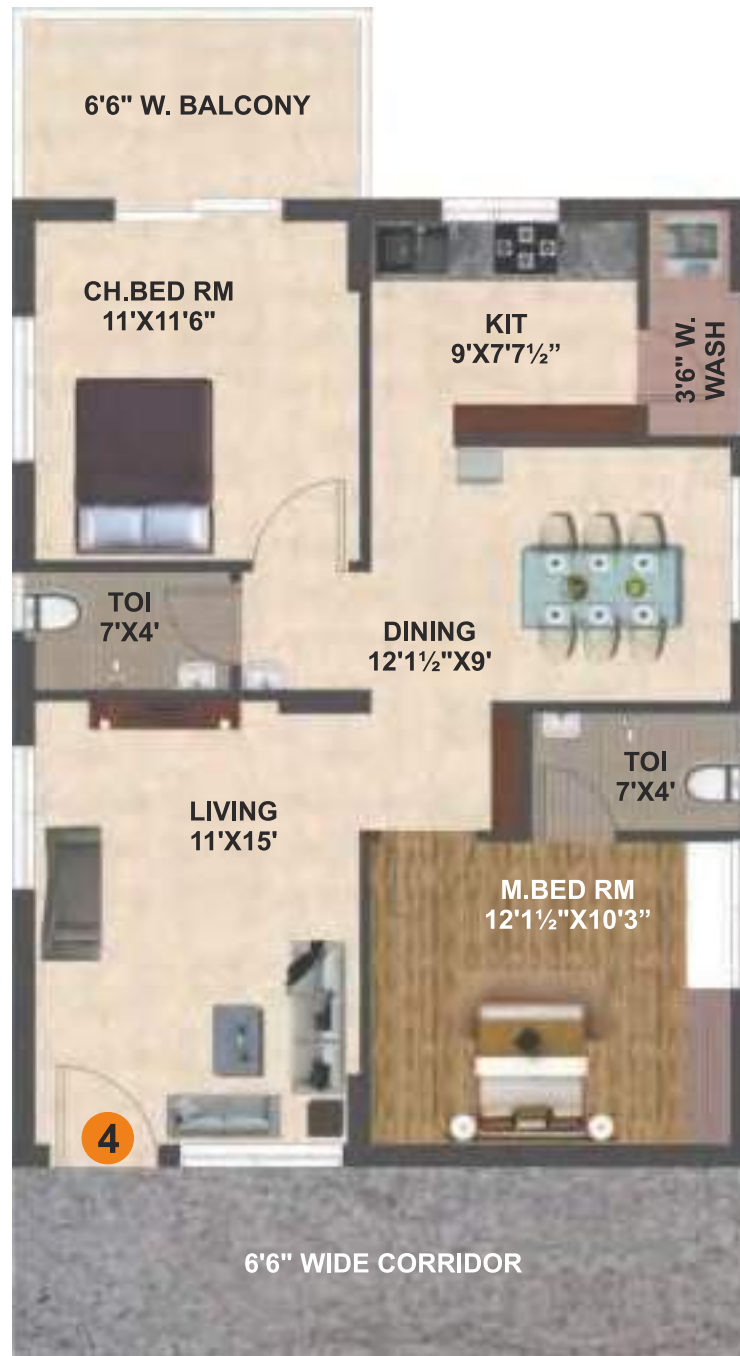
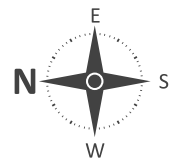
AREA : 1150 SFT



TYPICAL FLOOR PLAN

2ND TO 10TH FLOORS

BLOCK B



BLOCK - B Flat No. 4

FACING : WEST

TYPE : 2 BHK

AREA : 1150 SFT

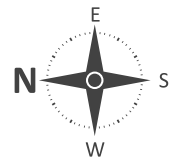


KEY PLAN

TYPICAL FLOOR PLAN

2ND TO 10TH FLOORS

BLOCK B



BLOCK - B

Flat No. 5

FACING : WEST

TYPE : 2 BHK

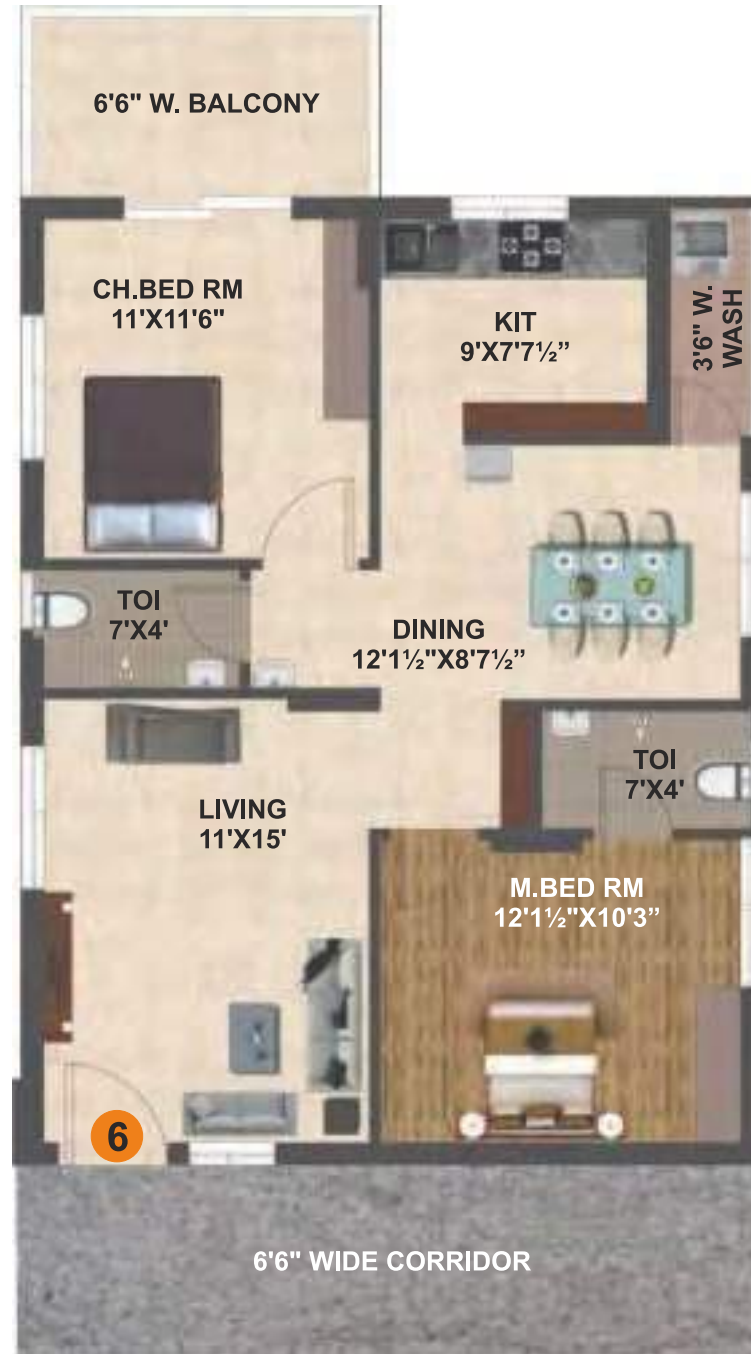
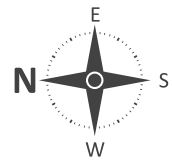
AREA : 1210 SFT



TYPICAL FLOOR PLAN

2ND TO 10TH FLOORS

BLOCK B



BLOCK - B

Flat No. 6

FACING : WEST

TYPE : 2 BHK

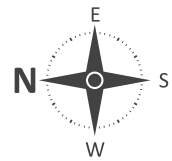
AREA : 1150 SFT



TYPICAL FLOOR PLAN

2ND TO 10TH FLOORS

BLOCK B



BLOCK - B Flat No. 7

FACING : WEST

TYPE : 2 BHK

AREA : 1300 SFT



TYPICAL FLOOR PLAN

2ND TO 10TH FLOORS

BLOCK B



BLOCK - B Flat No. 8

FACING : WEST

TYPE : 3 BHK

AREA : 1655 SFT

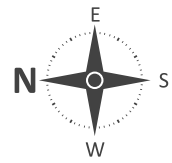


KEY PLAN

TYPICAL FLOOR PLAN

2ND TO 10TH FLOORS

BLOCK B



BLOCK - B Flat No. 9

FACING : EAST

TYPE : 3 BHK

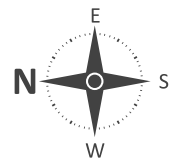
AREA : 1655 SFT



TYPICAL FLOOR PLAN

2ND TO 10TH FLOORS

BLOCK B



BLOCK - B Flat No. 10

FACING : EAST

TYPE : 3 BHK

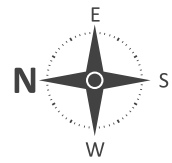
AREA : 1750 SFT



TYPICAL FLOOR PLAN

2ND TO 10TH FLOORS

BLOCK B



BLOCK - B

Flat No. 11

FACING : EAST

TYPE : 2 BHK

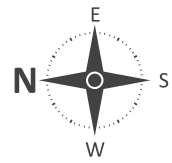
AREA : 1150 SFT



TYPICAL FLOOR PLAN

2ND TO 10TH FLOORS

BLOCK B



BLOCK - B

Flat No. 12

FACING : EAST

TYPE : 3 BHK

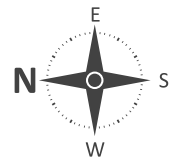
AREA : 1510 SFT



KEY PLAN

TYPICAL FLOOR PLAN
2ND TO 10TH FLOORS

BLOCK B



BLOCK - B
Flat No. 13

FACING : EAST

TYPE : 2 BHK

AREA : 1150 SFT

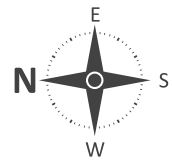


KEY PLAN

TYPICAL FLOOR PLAN

2ND TO 10TH FLOORS

BLOCK B



BLOCK - B

Flat No. 14

FACING : EAST

TYPE : 2 BHK

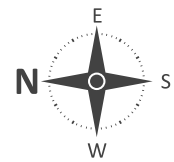
AREA : 1150 SFT



TYPICAL FLOOR PLAN

2ND TO 10TH FLOORS

BLOCK B



BLOCK - B Flat No. 15

FACING : EAST

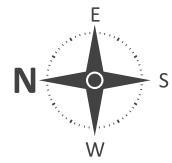
TYPE : 3 BHK

AREA : 1750 SFT



TYPICAL FLOOR PLAN
2ND TO 10TH FLOORS

BLOCK B



BLOCK - B
Flat No. 16

FACING : EAST

TYPE : 3 BHK

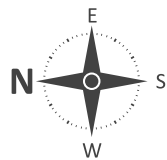
AREA : 1450 SFT



KEY PLAN

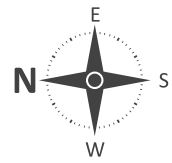
FIRST FLOOR PLAN

BLOCK C



FIRST FLOOR PLAN

BLOCK C



BLOCK - C
Flat No. 1

FACING : WEST

TYPE : 3 BHK

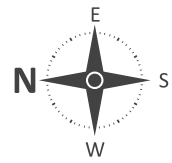
AREA : 1210 SFT



KEY PLAN

FIRST FLOOR PLAN

BLOCK C



BLOCK - C

Flat No. 2

FACING : WEST

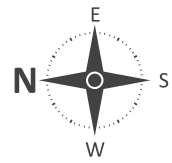
TYPE : 2 BHK

AREA : 1155 SFT



FIRST FLOOR PLAN

BLOCK C



BLOCK - C Flat No. 3

FACING : WEST

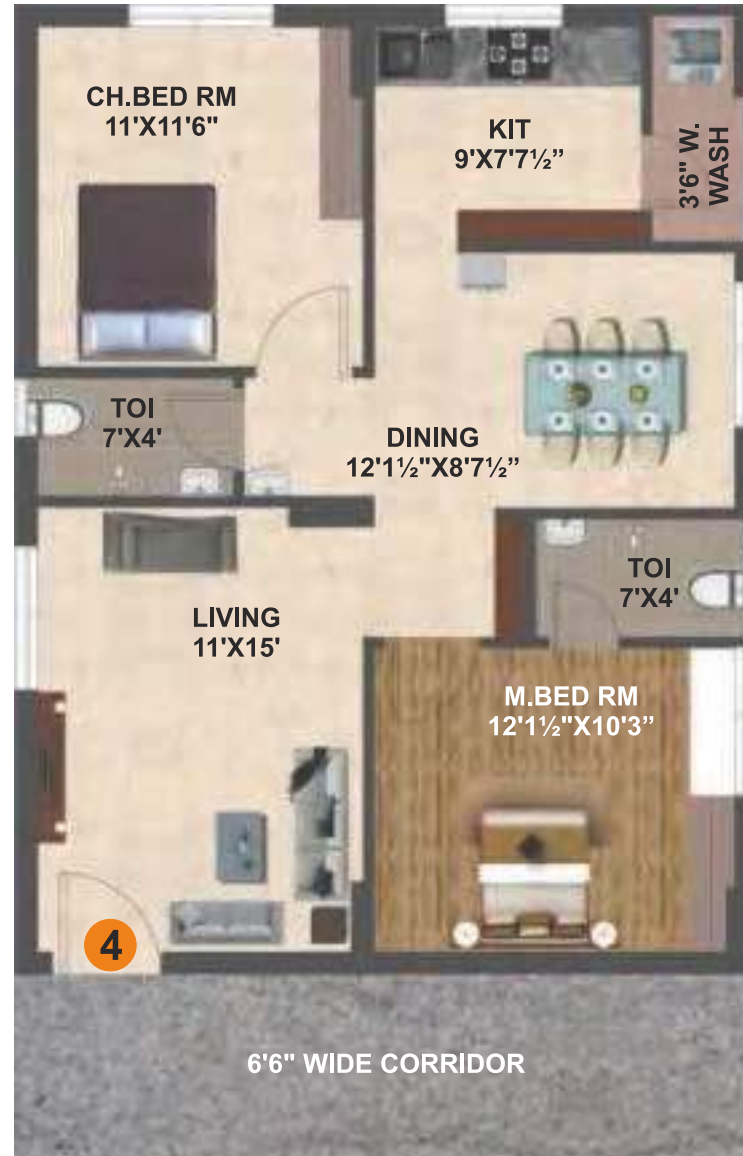
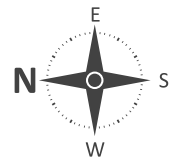
TYPE : 2 BHK

AREA : 1050 SFT



FIRST FLOOR PLAN

BLOCK C



BLOCK - C Flat No. 4

FACING : WEST

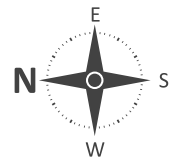
TYPE : 2 BHK

AREA : 1050 SFT



FIRST FLOOR PLAN

BLOCK C



BLOCK - C

Flat No. 5

FACING : WEST

TYPE : 2 BHK

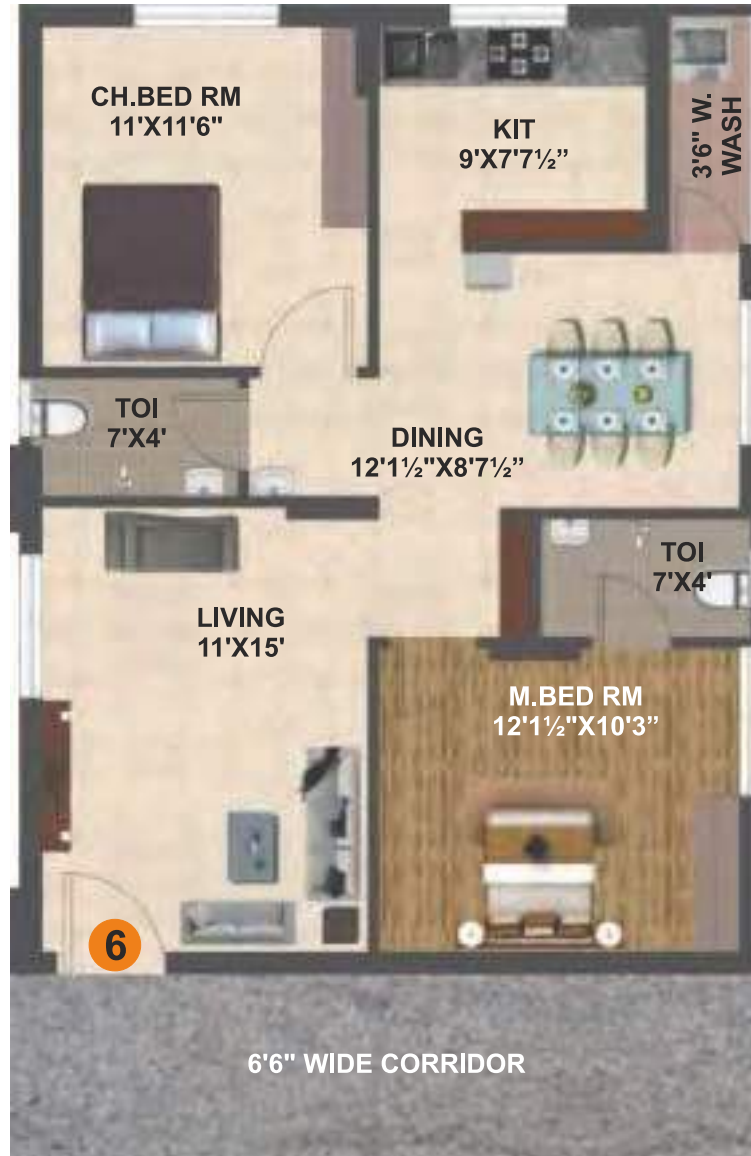
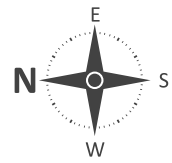
AREA : 1100 SFT



KEY PLAN

FIRST FLOOR PLAN

BLOCK C



BLOCK - C Flat No. 6

FACING : WEST

TYPE : 2 BHK

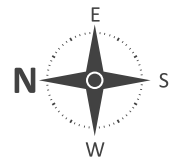
AREA : 1050 SFT



KEY PLAN

FIRST FLOOR PLAN

BLOCK C



BLOCK - C
Flat No. 7

FACING : WEST

TYPE : 2 BHK

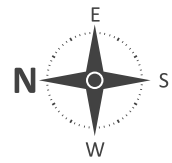
AREA : 1155 SFT



KEY PLAN

FIRST FLOOR PLAN

BLOCK C



BLOCK - C

Flat No. 8

FACING : WEST

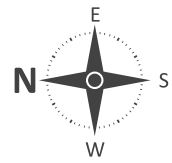
TYPE : 3 BHK

AREA : 1375 SFT



FIRST FLOOR PLAN

BLOCK C



BLOCK - C

Flat No. 9

FACING : EAST

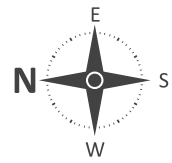
TYPE : 3 BHK

AREA : 1375 SFT



FIRST FLOOR PLAN

BLOCK C



BLOCK - C
Flat No. 10

FACING : EAST

TYPE : 3 BHK

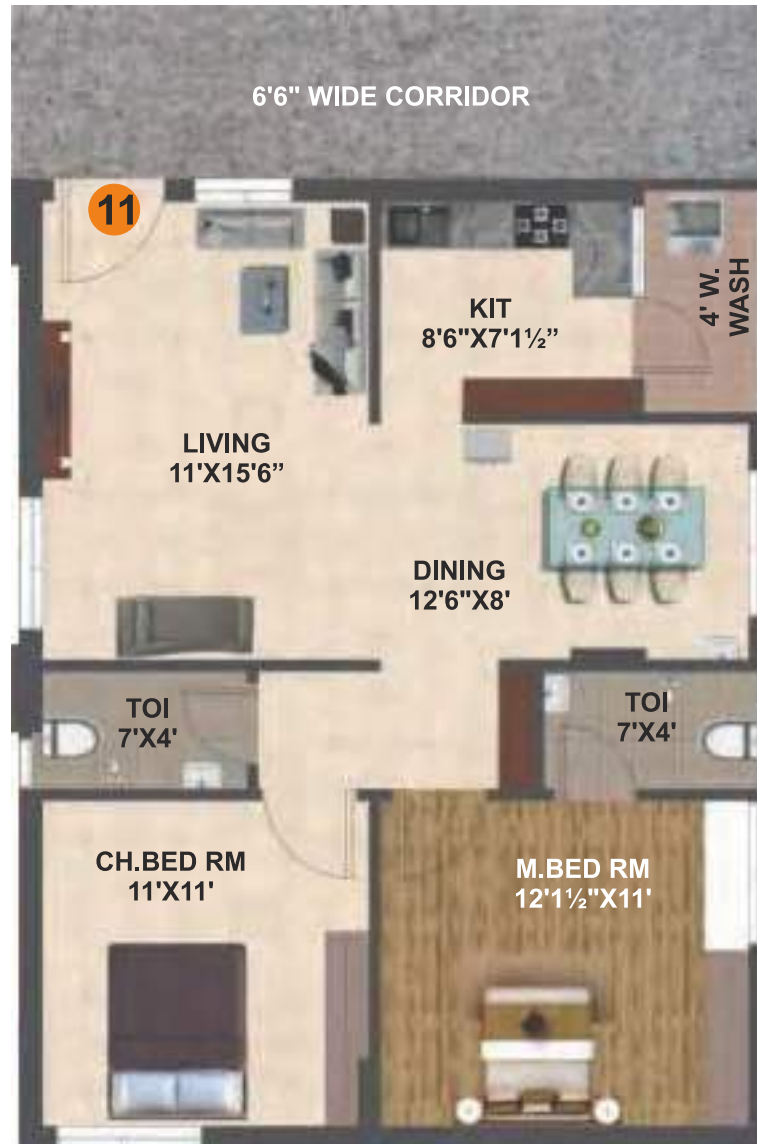
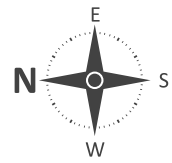
AREA : 1600 SFT



KEY PLAN

FIRST FLOOR PLAN

BLOCK C



BLOCK - C

Flat No. 11

FACING : EAST

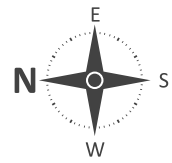
TYPE : 2 BHK

AREA : 1050 SFT



FIRST FLOOR PLAN

BLOCK C



BLOCK - C
Flat No. 12

FACING : EAST

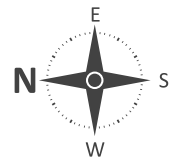
TYPE : 3 BHK

AREA : 1375 SFT



FIRST FLOOR PLAN

BLOCK C



BLOCK - C

Flat No. 13

FACING : EAST

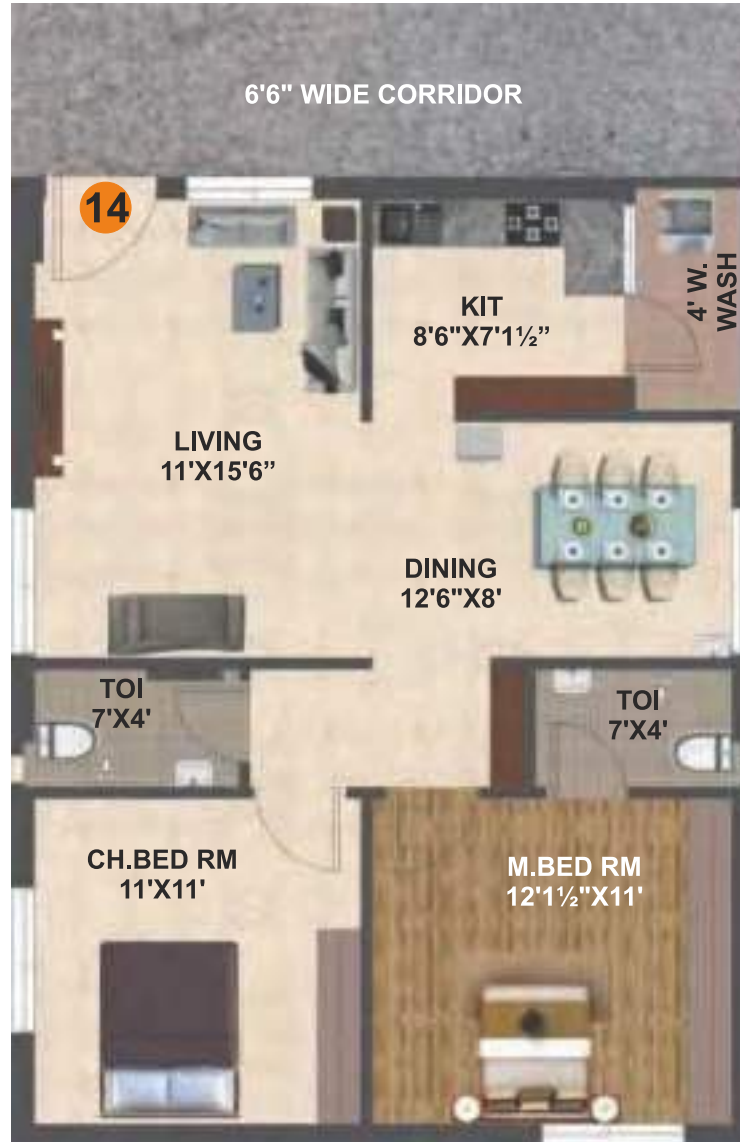
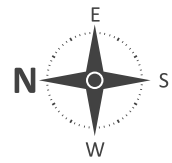
TYPE : 2 BHK

AREA : 1050 SFT



FIRST FLOOR PLAN

BLOCK C



BLOCK - C

Flat No. 14

FACING : EAST

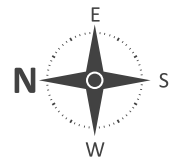
TYPE : 2 BHK

AREA : 1050 SFT



FIRST FLOOR PLAN

BLOCK C



BLOCK - C
Flat No. 15

FACING : EAST

TYPE : 3 BHK

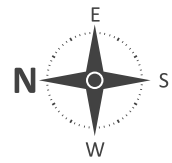
AREA : 1600 SFT



KEY PLAN

FIRST FLOOR PLAN

BLOCK C



BLOCK - C
Flat No. 16

FACING : EAST

TYPE : 3 BHK

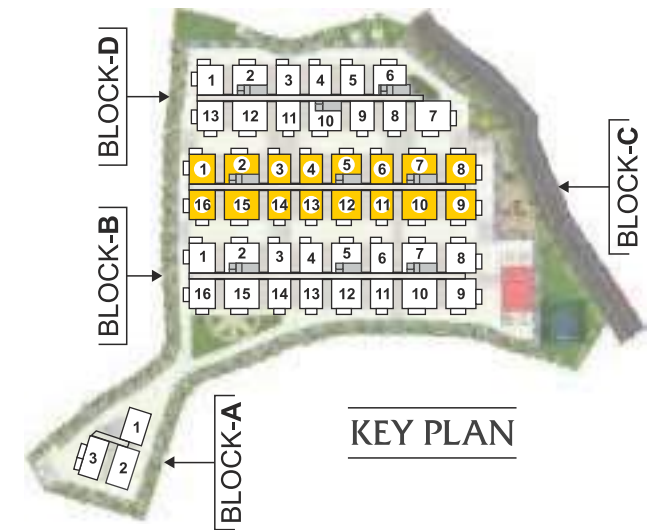
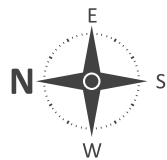
AREA : 1210 SFT



TYPICAL FLOOR PLAN

2ND TO 10TH FLOORS

BLOCK C

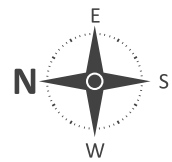


KEY PLAN

TYPICAL FLOOR PLAN

2ND TO 10TH FLOORS

BLOCK C



BLOCK - C

Flat No. 1

FACING : WEST

TYPE : 3 BHK

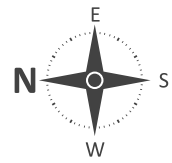
AREA : 1450 SFT



TYPICAL FLOOR PLAN

2ND TO 10TH FLOORS

BLOCK C



BLOCK - C Flat No. 2

FACING : WEST

TYPE : 2 BHK

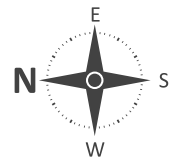
AREA : 1300 SFT



TYPICAL FLOOR PLAN

2ND TO 10TH FLOORS

BLOCK C



BLOCK - C

Flat No. 3

FACING : WEST

TYPE : 2 BHK

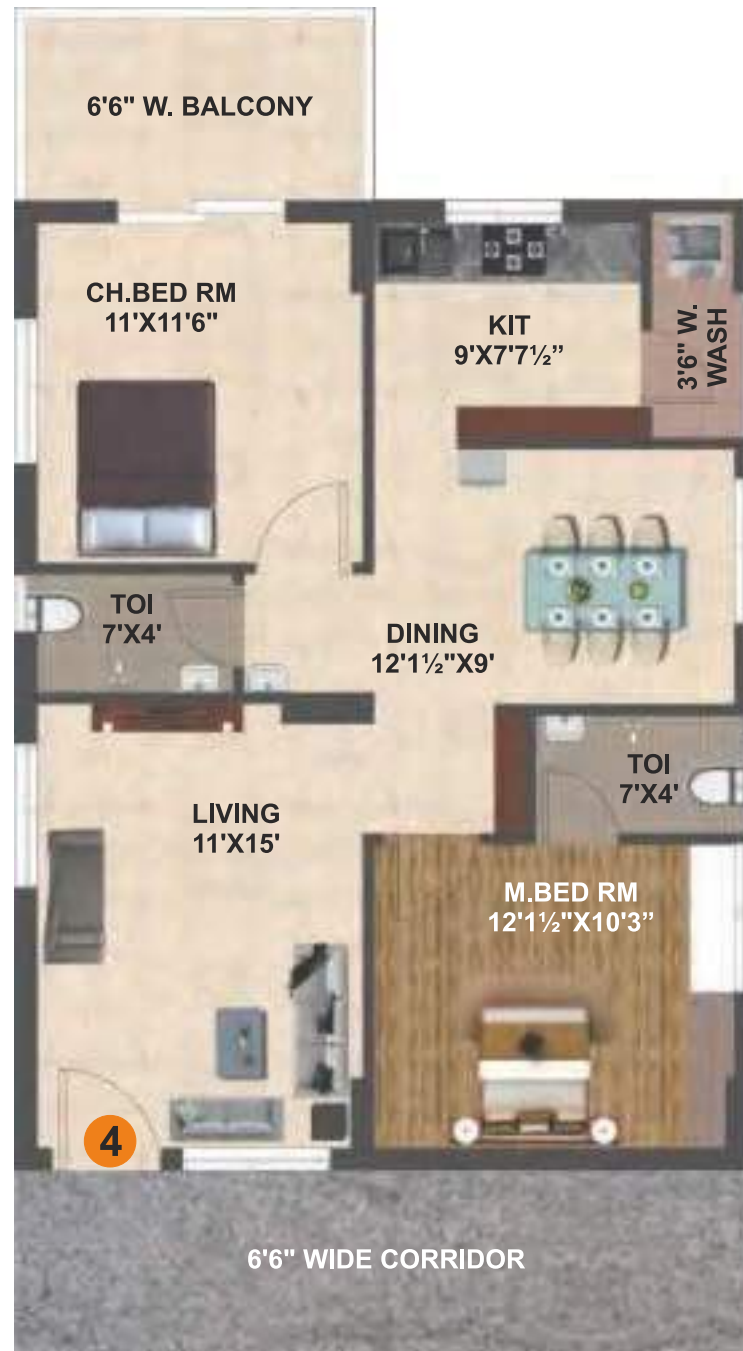
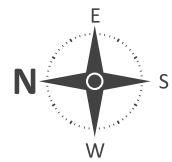
AREA : 1150 SFT



TYPICAL FLOOR PLAN

2ND TO 10TH FLOORS

BLOCK C



BLOCK - C

Flat No. 4

FACING : WEST

TYPE : 2 BHK

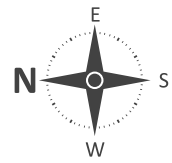
AREA : 1150 SFT



TYPICAL FLOOR PLAN

2ND TO 10TH FLOORS

BLOCK C



BLOCK - C

Flat No. 5

FACING : WEST

TYPE : 2 BHK

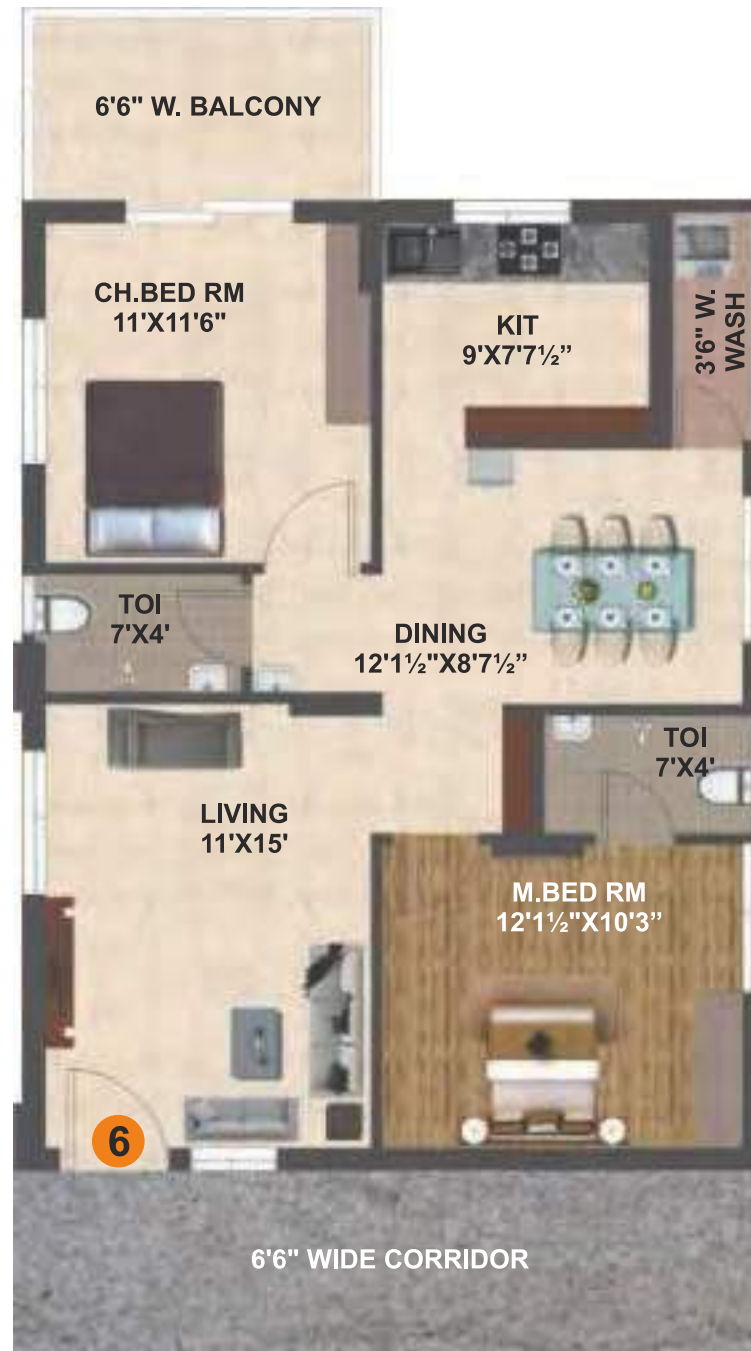
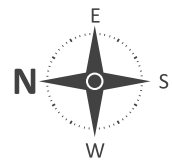
AREA : 1210 SFT



TYPICAL FLOOR PLAN

2ND TO 10TH FLOORS

BLOCK C



BLOCK - C

Flat No. 6

FACING : WEST

TYPE : 2 BHK

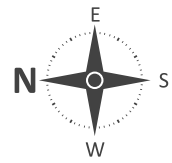
AREA : 1150 SFT



TYPICAL FLOOR PLAN

2ND TO 10TH FLOORS

BLOCK C



BLOCK - C Flat No. 7

FACING : WEST

TYPE : 2 BHK

AREA : 1300 SFT



TYPICAL FLOOR PLAN

2ND TO 10TH FLOORS

BLOCK C



BLOCK - C Flat No. 8

FACING : WEST

TYPE : 3 BHK

AREA : 1655 SFT



KEY PLAN

TYPICAL FLOOR PLAN

2ND TO 10TH FLOORS

BLOCK C

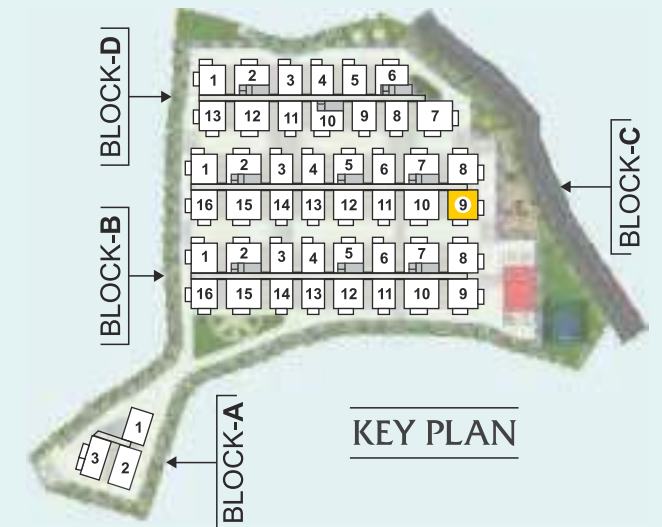


BLOCK - C Flat No. 9

FACING : EAST

TYPE : 3 BHK

AREA : 1655 SFT

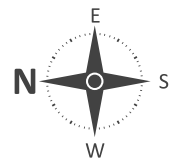


KEY PLAN

TYPICAL FLOOR PLAN

2ND TO 10TH FLOORS

BLOCK C



BLOCK - C Flat No. 10

FACING : EAST

TYPE : 3 BHK

AREA : 1750 SFT

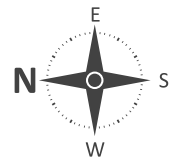


KEY PLAN

TYPICAL FLOOR PLAN

2ND TO 10TH FLOORS

BLOCK C



BLOCK - C

Flat No. 11

FACING : EAST

TYPE : 2 BHK

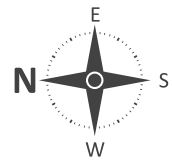
AREA : 1150 SFT



TYPICAL FLOOR PLAN

2ND TO 10TH FLOORS

BLOCK C



BLOCK - C

Flat No. 12

FACING : EAST

TYPE : 3 BHK

AREA : 1510 SFT

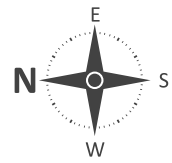


KEY PLAN

TYPICAL FLOOR PLAN

2ND TO 10TH FLOORS

BLOCK C



BLOCK - C

Flat No. 13

FACING : EAST

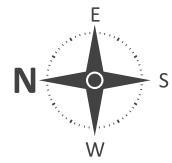
TYPE : 2 BHK

AREA : 1150 SFT



TYPICAL FLOOR PLAN
2ND TO 10TH FLOORS

BLOCK C



BLOCK - C
Flat No. 14

FACING : EAST

TYPE : 2 BHK

AREA : 1150 SFT

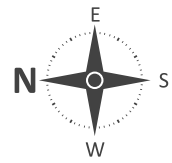


KEY PLAN

TYPICAL FLOOR PLAN

2ND TO 10TH FLOORS

BLOCK C



BLOCK - C Flat No. 15

FACING : EAST

TYPE : 3 BHK

AREA : 1750 SFT

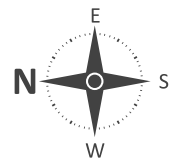


KEY PLAN

TYPICAL FLOOR PLAN

2ND TO 10TH FLOORS

BLOCK C



BLOCK - C Flat No. 16

FACING : EAST

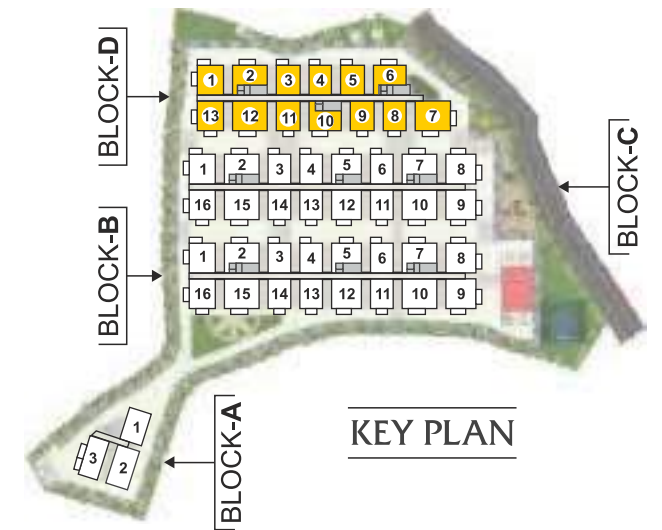
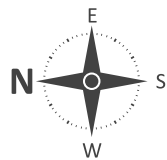
TYPE : 3 BHK

AREA : 1450 SFT



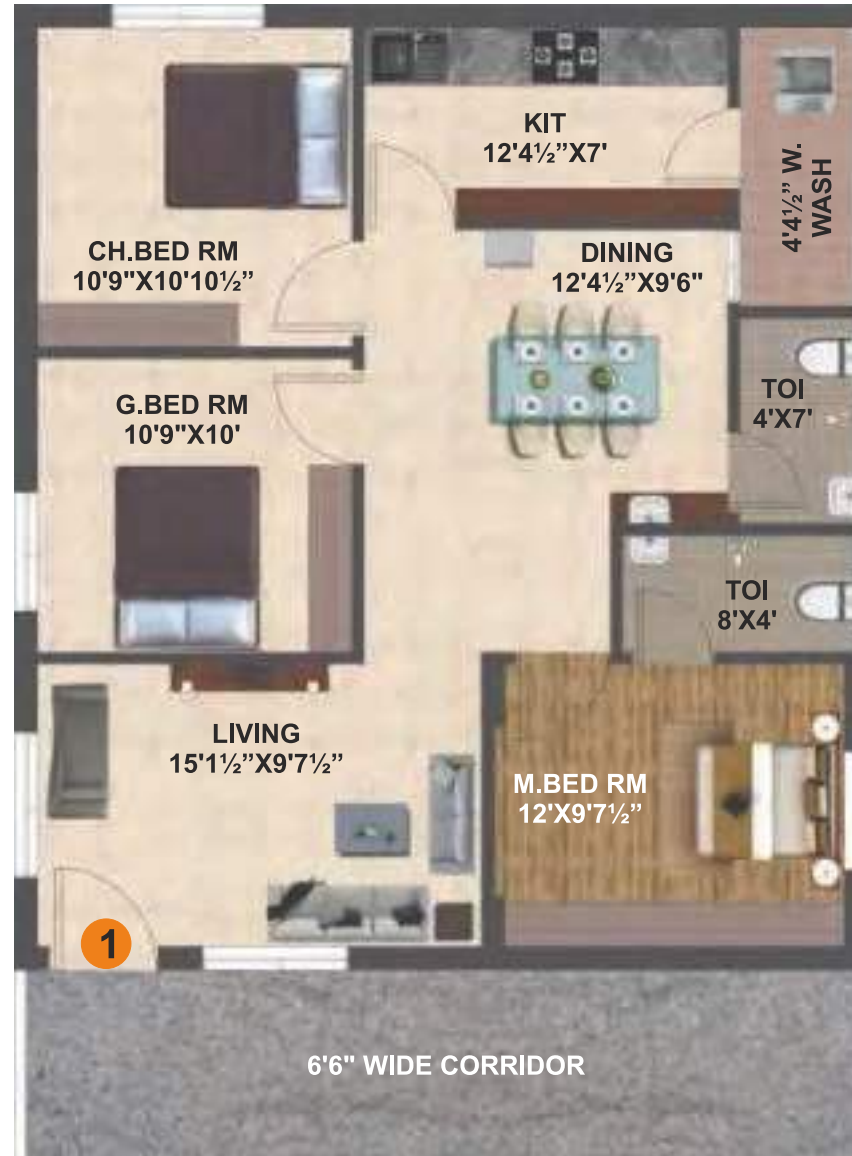
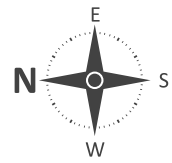
FIRST FLOOR PLAN

BLOCK D



FIRST FLOOR PLAN

BLOCK D



BLOCK - D

Flat No. 1

FACING : WEST

TYPE : 3 BHK

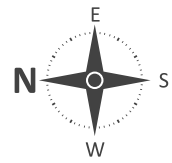
AREA : 1210 SFT



KEY PLAN

FIRST FLOOR PLAN

BLOCK D



BLOCK - D

Flat No. 2

FACING : WEST

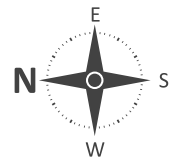
TYPE : 2 BHK

AREA : 1155 SFT



FIRST FLOOR PLAN

BLOCK D



BLOCK - D

Flat No. 3

FACING : WEST

TYPE : 2 BHK

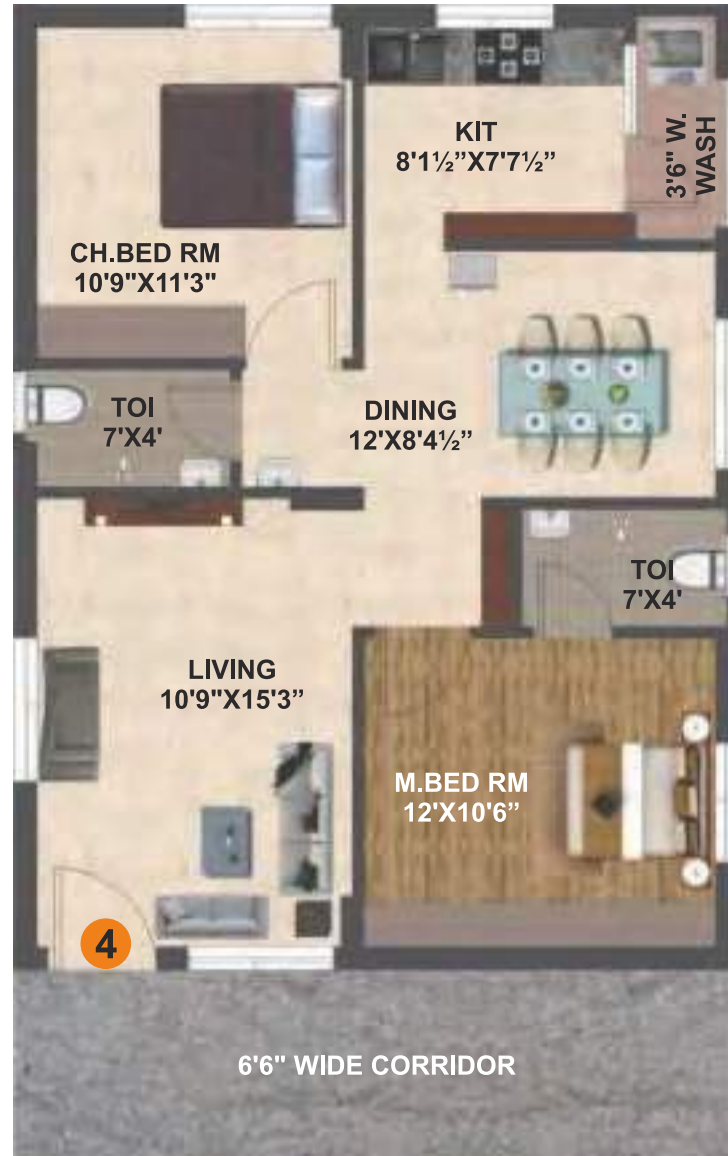
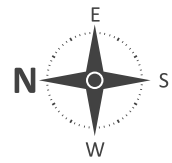
AREA : 1100 SFT



KEY PLAN

FIRST FLOOR PLAN

BLOCK D



BLOCK - D

Flat No. 4

FACING : WEST

TYPE : 2 BHK

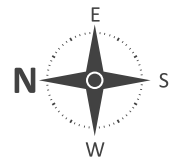
AREA : 1025 SFT



KEY PLAN

FIRST FLOOR PLAN

BLOCK D



BLOCK - D

Flat No. 5

FACING : WEST

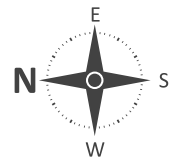
TYPE : 2 BHK

AREA : 1100 SFT



FIRST FLOOR PLAN

BLOCK D



BLOCK - D Flat No. 6

FACING : WEST

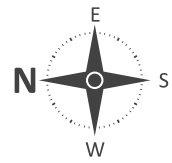
TYPE : 2 BHK

AREA : 1100 SFT



FIRST FLOOR PLAN

BLOCK D



BLOCK - D Flat No. 7

FACING : EAST

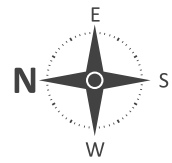
TYPE : 3 BHK

AREA : 1625 SFT



FIRST FLOOR PLAN

BLOCK D



BLOCK - D Flat No. 8

FACING : EAST

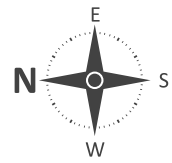
TYPE : 2 BHK

AREA : 1055 SFT



FIRST FLOOR PLAN

BLOCK D



BLOCK - D

Flat No. 9

FACING : EAST

TYPE : 2 BHK

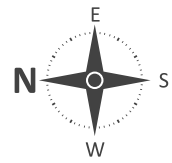
AREA : 1100 SFT



KEY PLAN

FIRST FLOOR PLAN

BLOCK D



BLOCK - D

Flat No. 10

FACING : EAST

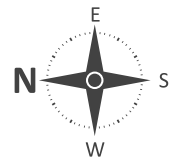
TYPE : 2 BHK

AREA : 1100 SFT



FIRST FLOOR PLAN

BLOCK D



BLOCK - D

Flat No. 11

FACING : EAST

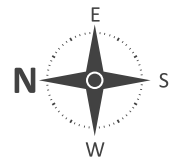
TYPE : 2 BHK

AREA : 1100 SFT



FIRST FLOOR PLAN

BLOCK D



BLOCK - D

Flat No. 12

FACING : EAST

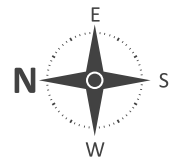
TYPE : 3 BHK

AREA : 1600 SFT



FIRST FLOOR PLAN

BLOCK D



BLOCK - D
Flat No. 13

FACING : EAST

TYPE : 3 BHK

AREA : 1210 SFT

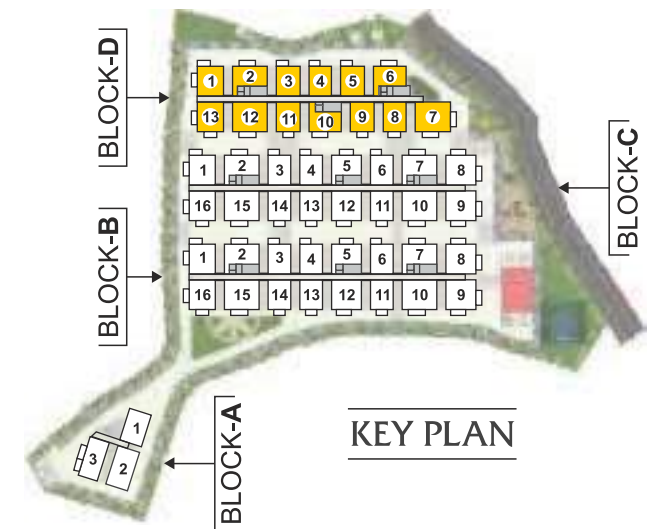
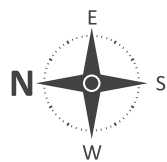


KEY PLAN

TYPICAL FLOOR PLAN

2ND TO 10TH FLOORS

BLOCK D

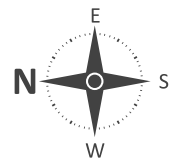


KEY PLAN

TYPICAL FLOOR PLAN

2ND TO 10TH FLOORS

BLOCK D



BLOCK - D Flat No. 1

FACING : WEST

TYPE : 3 BHK

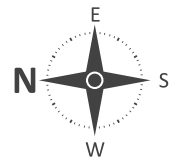
AREA : 1450 SFT



TYPICAL FLOOR PLAN

2ND TO 10TH FLOORS

BLOCK D



BLOCK - D Flat No. 2

FACING : WEST

TYPE : 2 BHK

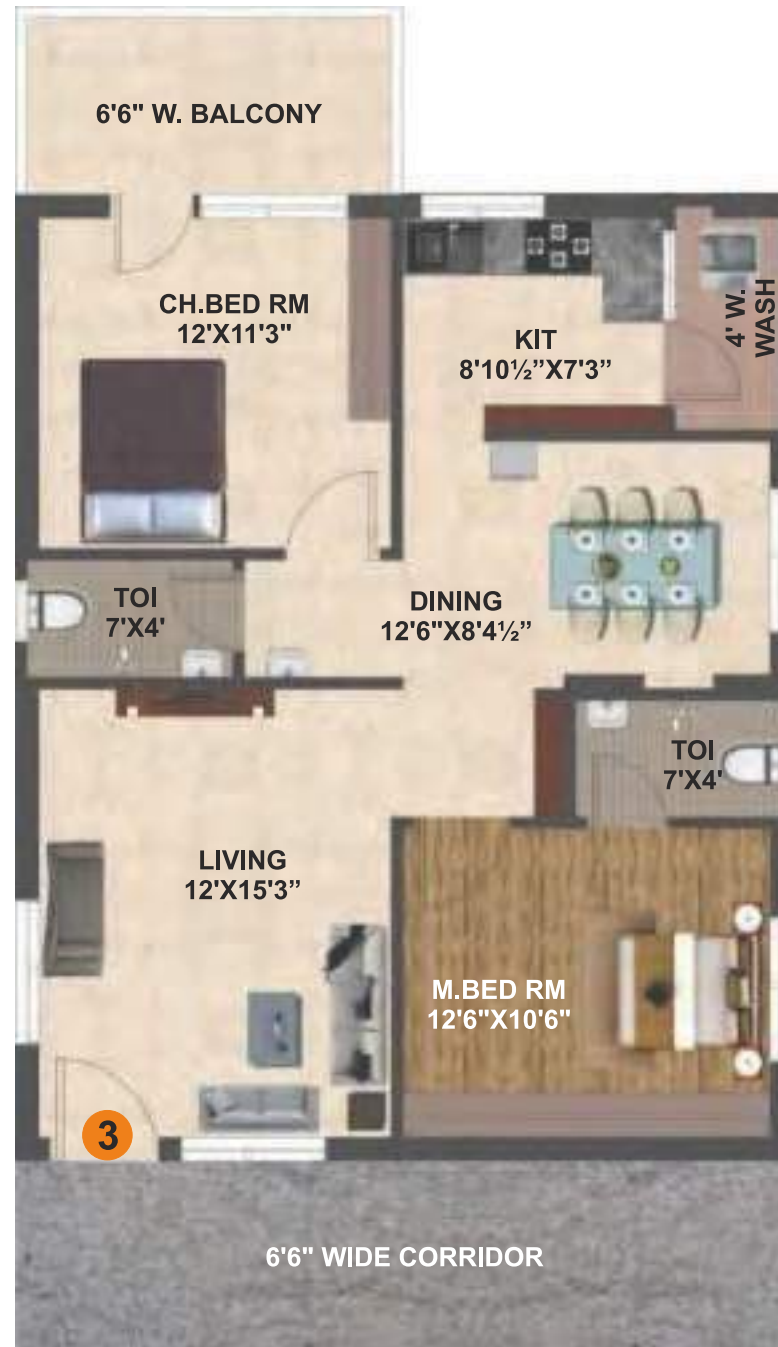
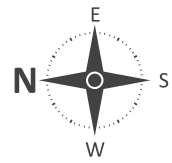
AREA : 1300 SFT



TYPICAL FLOOR PLAN

2ND TO 10TH FLOORS

BLOCK D



BLOCK - D

Flat No. 3

FACING : WEST

TYPE : 2 BHK

AREA : 1200 SFT

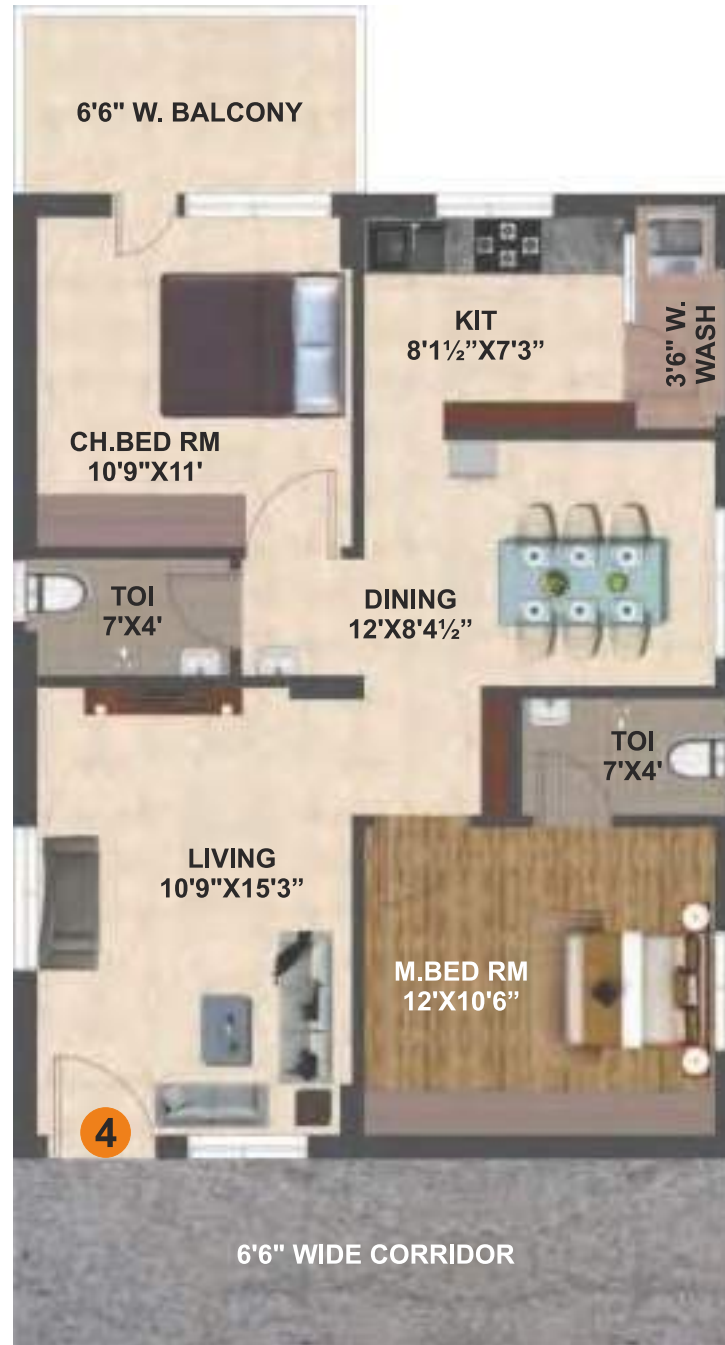
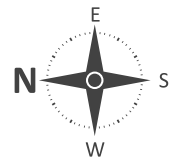


KEY PLAN

TYPICAL FLOOR PLAN

2ND TO 10TH FLOORS

BLOCK D



BLOCK - D

Flat No. 4

FACING : WEST

TYPE : 2 BHK

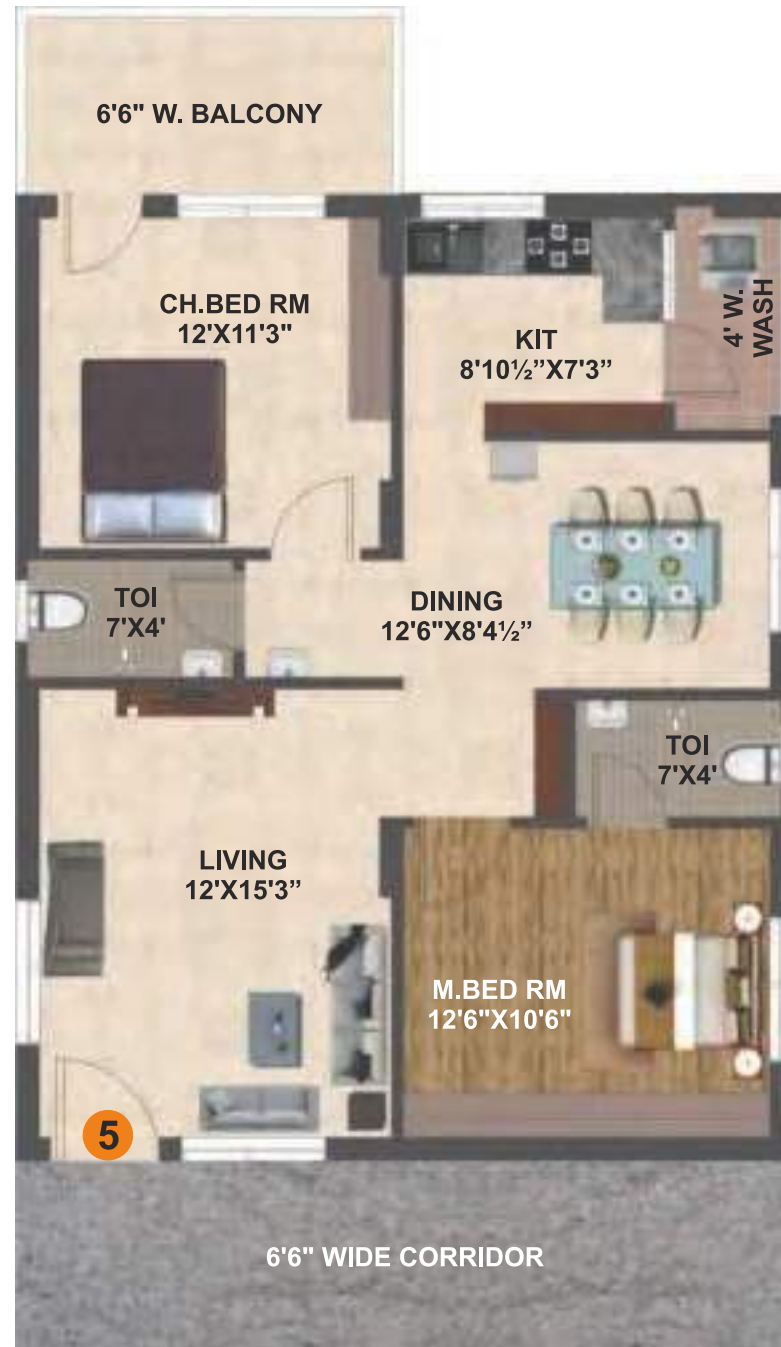
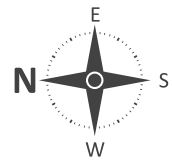
AREA : 1125 SFT



TYPICAL FLOOR PLAN

2ND TO 10TH FLOORS

BLOCK D



BLOCK - D

Flat No. 5

FACING : WEST

TYPE : 2 BHK

AREA : 1200 SFT



TYPICAL FLOOR PLAN

2ND TO 10TH FLOORS

BLOCK D



BLOCK - D Flat No. 6

FACING : WEST

TYPE : 2 BHK

AREA : 1250 SFT



TYPICAL FLOOR PLAN

2ND TO 10TH FLOORS

BLOCK D



BLOCK - D Flat No. 7

FACING : EAST

TYPE : 3 BHK

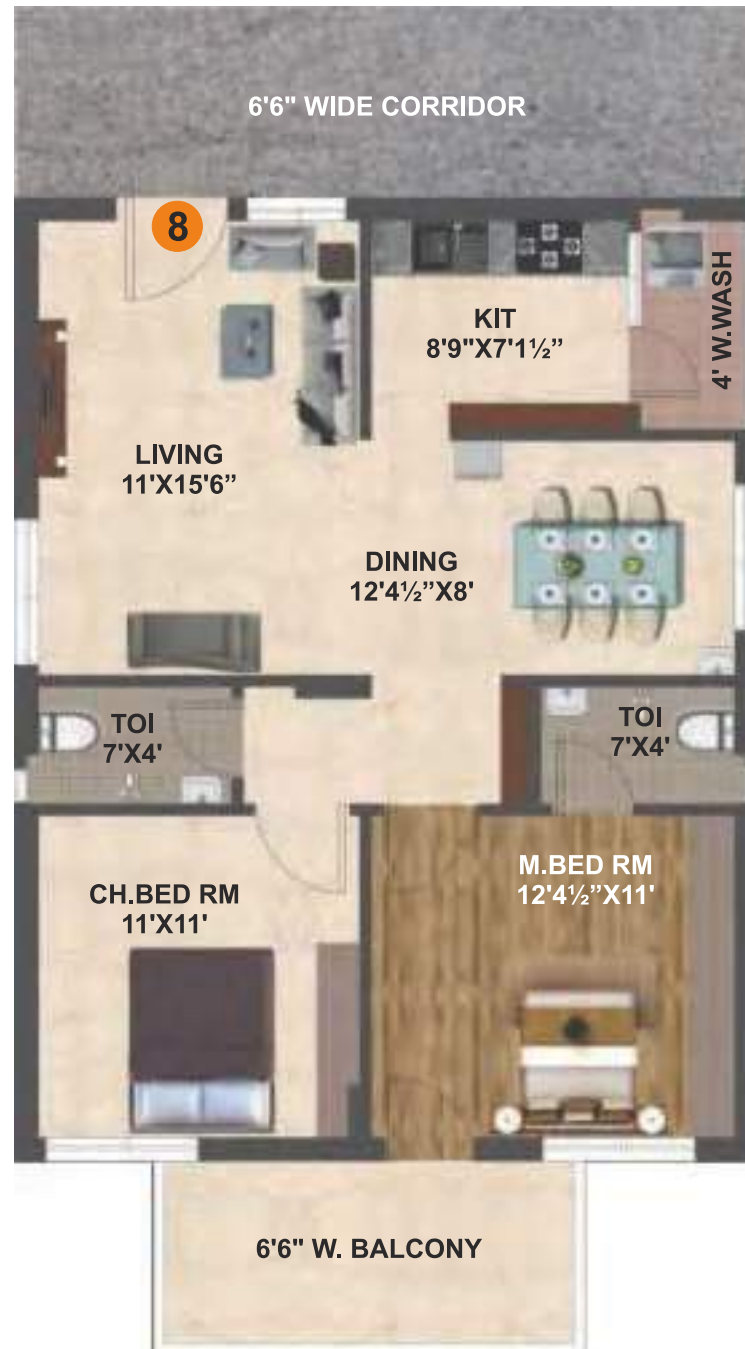
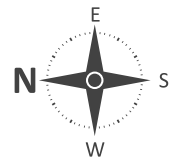
AREA : 1900 SFT



TYPICAL FLOOR PLAN

2ND TO 10TH FLOORS

BLOCK D



BLOCK - D

Flat No. 8

FACING : EAST

TYPE : 2 BHK

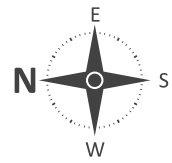
AREA : 1165 SFT



KEY PLAN

TYPICAL FLOOR PLAN
2ND TO 10TH FLOORS

BLOCK D



BLOCK - D
Flat No. 9

FACING : EAST

TYPE : 2 BHK

AREA : 1200 SFT

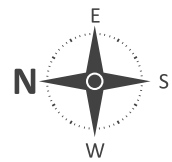


KEY PLAN

TYPICAL FLOOR PLAN

2ND TO 10TH FLOORS

BLOCK D



BLOCK - D Flat No. 10

FACING : EAST

TYPE : 2 BHK

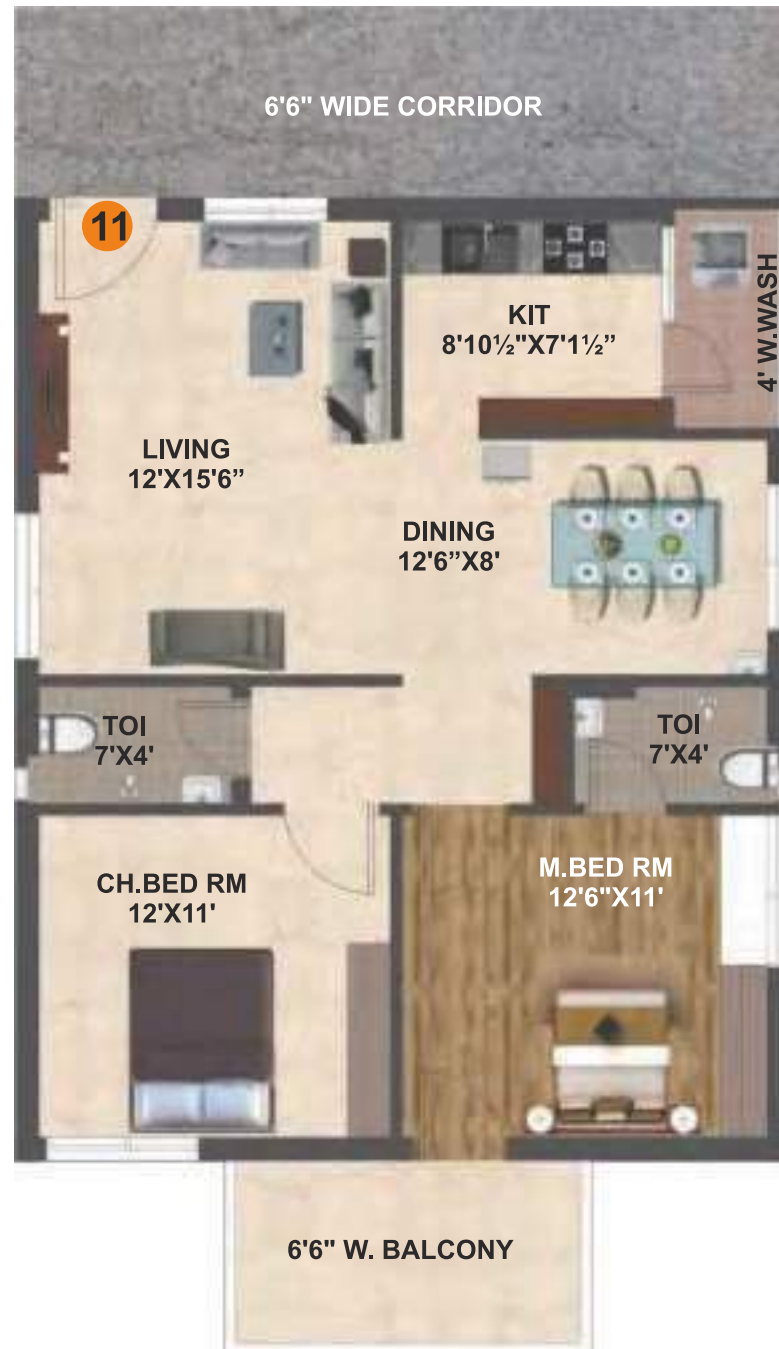
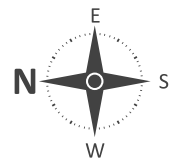
AREA : 1290 SFT



TYPICAL FLOOR PLAN

2ND TO 10TH FLOORS

BLOCK D



BLOCK - D Flat No. 11

FACING : EAST

TYPE : 2 BHK

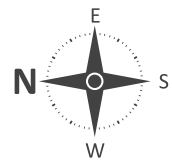
AREA : 1200 SFT



TYPICAL FLOOR PLAN

2ND TO 10TH FLOORS

BLOCK D



BLOCK - D Flat No. 12

FACING : EAST

TYPE : 3 BHK

AREA : 1750 SFT

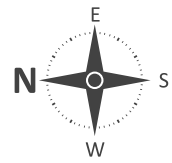


KEY PLAN

TYPICAL FLOOR PLAN

2ND TO 10TH FLOORS

BLOCK D



BLOCK - D Flat No. 13

FACING : EAST

TYPE : 3 BHK

AREA : 1450 SFT



ISO VIEWS
BLOCK D



Flat 7
(1900 SFT)



Flat 12
(1750 SFT)

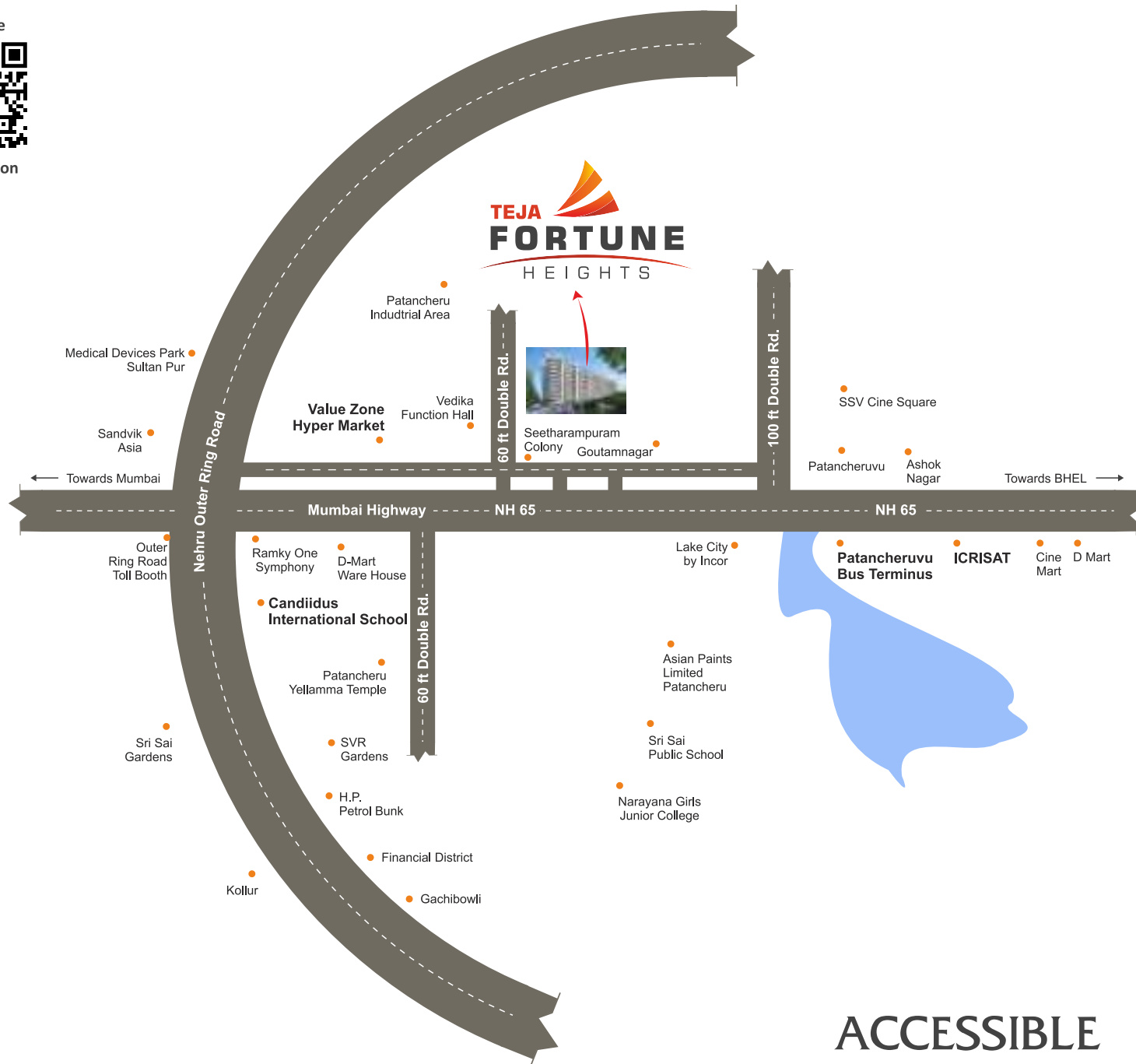
LOCATION PLAN

(Not to Scale)

QR Code



For Location



ACCESSIBLE BY ALL COUNTS



SHOPPING MALLS

Value Zone Hyper Market	- 0.5 km
BM Shopping Complex	- 4 km
The Brand Boy	- 5 km

HOSPITALS

Max Care Hospital	- 5 km
PIMS (Padmavathi Institute of Medical Sciences)	- 1.5 km
Prachin Global Hospitals	- 1 km
Government Hospital, Patancheru	- 1.9 km
Sai Ganesh Multi Speciality Hospital	- 1.6 km

COLLEGES

IIT - Hyderabad	- 21 km
RRS College of Engineering & Technology	- 7.8 km
Manjeera College of Education	- 3.9 km
Narayana Girls Junior College	- 4.6 km
Ellenki College of Engineering & Technology	- 4.6 km
St. Mary's Visual Arts & Design Degree College	- 1.5 km
Aryabhata Degree College	- 1.2 km

SCHOOLS

Gaudium School	- 7.5 km
Narayana IIT Academy	- 6.5 km
Bhashyam Blooms School	- 2 km
Origin International School	- 2.6 km
Sri Chaitanya High School	- 1.3 km
Viswabharathi Public School	- 800 mtrs
Brilliant Grammar High School	- 1.1 km
St Mary's High School	- 1.6 km
Origin Techno School	- 800mtrs
Sri Sai Public School	- 3.9 km

CONNECTIVITY

Mumbai Highway (NH-65)	- 0.3 km
Patancheru Main Bus Terminus	- 0.5 km
Proposed Metro Station	- 1 km
ORR - Patancheru - Exit No. 3	- 2 km
Financial District / Gachibowli	- 25 mins
Hyderabad International Airport	- 45 mins

Note: All the distances mentioned here are approximate values



Plot No. 11&12A, Krupa Towers, Western Hills, Opp. JNTU, Kukatpally, Hyderabad.

Call: +91 **9676545599**

e-mail: info@tejahomes.com

www.tejahomes.com

Site Address:

**Patancheru, Hyderabad,
Telangana - 500019.**

Architects & Engineers:

SURYA CONSULTANCY

Bhagyanagar Colony, Hyderabad.

Approved by Banks

